

## 2540 Privacy Set Lever

### Grade 2 Cylindrical Lever

#### Applications:

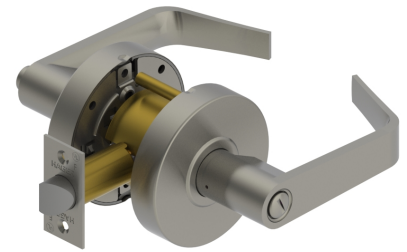
- Standard duty commercial
- Standard door prep - 2-1/8" (54mm) diameter (cross bore)
- Latch hole - 1" (25mm) diameter (edge bore)

#### Notes:

- No exposed mounting screws
- Non-handed

#### Function:

- Privacy (ANSI F76A)



## PRODUCT SPECIFICATIONS

#### CERTIFICATIONS:

- ADA Compliant ANSI A117.1 Accessibility Code
- UL/cUL Listed for all functions up to 3 hours "A" label single doors
- UL10C Positive Pressure Rated
- UL10B Neutral Pressure Rated
- Meets BHMA A156.2 test standards

#### EXPOSED TRIM:

- Wrought brass, bronze, and stainless steel
- Lever is zinc based, plated to match BHMA symbols

#### LOCK CHASSIS:

- Heavy gauge steel, zinc dichromated for corrosion resistance
- Removable thru-bolts
- Failure to install thru-bolts and removable screw posts voids BHMA certification, UL rating, and warranty
- Non-Clutching levers

#### ROSE DIAMETER:

- 3-11/32" (85 mm)

#### DOOR THICKNESS:

- 1-3/8" - 2" (35 mm - 51 mm)

#### BACKSET:

- 2-3/4" (70 mm) standard
- 2-3/8" (60 mm) optional

#### LATCHBOLT:

- 1/2" (13 mm) throw, stainless steel
- 1-1/8" x 2-1/4" (29 mm x 57 mm) faceplate for 2-3/4" (70 mm) backset
- 1" x 2-1/4" (25 mm x 57 mm) faceplate for 2-3/8" backset

#### STRIKES:

- ANSI 4-7/8" x 1-1/4" (32 mm x 124 mm) strike standard
- Optional strikes available

#### FINISHES:

- US3, US10B, US26D

#### FUNCTIONS:

- 40 - Privacy,

#### WARRANTY:

- Five-year

#### LEVER OPTIONS:

- Archer, Withnell levers

#### OPTIONS:

- Lead lined
- Tactile warning