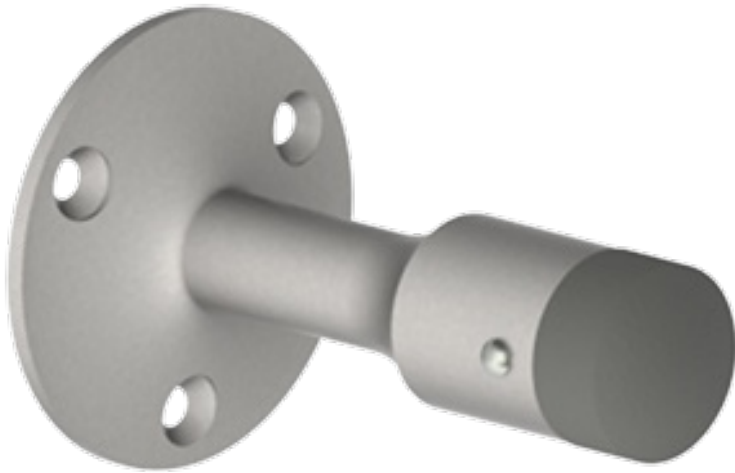


## Product Information

---

- Notes:**
- For use on dry wall
  - Ideal for interior and exterior applications
  - Heavy duty - for use in high traffic areas
  - Ideal for use with locksets with a projection of 3" (76 mm) or less

Wall Stop



## Product Specifications

---

- Certifications:** - Meets ANSI A156.16 for L02011
- Diameter:** - 2-11/32" (60 mm)
- Projection:** - 3-11/16" (94 mm)
- Materials:** - Cast brass with black rubber bumper
- Finishes:** - US3, US4, US10, US10B, US15, US26, US26D
- Fastener:** - Three (3) #10 x 1" OPHWS and three (3) plastic anchor