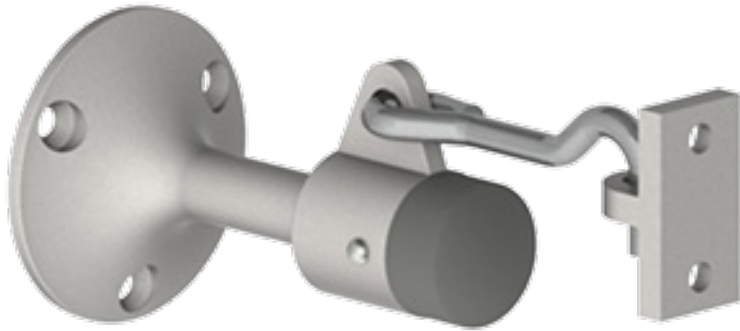


Product Information

- Notes:**
- For use on dry wall
 - Ideal for interior and exterior applications
 - Heavy duty - for use in high traffic areas
 - Unit functions as a stop, but can serve as a "Hold Open" when hook is manually engaged
 - Ideal for use with locksets with a projection of 3" (76 mm) or less



Manual Wall Stop and Holder

Product Specifications

- Certifications:** - Meets ANSI A156.16 for L01341
- Base diameter:** - 2-1/4" (57 mm)
- Base projection:** - 3-25/32" (98 mm)
- Keeper:** - 25/32" x 1-1/2" (20 mm x 38 mm)
- Materials:** - Cast brass with black rubber bumper
- Finishes:** - US3, US10, US10B, US15, US26, US26D
- Fasteners:** - Three (3) #10 x 1 OPHWS and three (3) plastic anchors
- Engaged projection:** - 5-11/16" (145 mm)