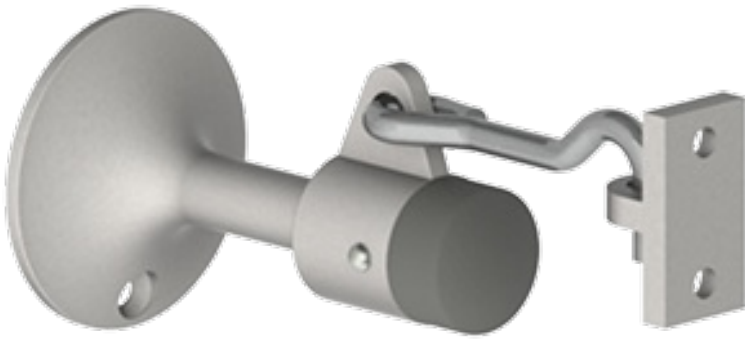


## Product Information

---

- Notes:**
- For use on concrete walls
  - Ideal for interior and exterior applications
  - Heavy duty - for use in high traffic areas
  - Unit functions as a stop, but can serve as a "Hold Open" when hook is manually engaged
  - Ideal for use with locksets with a projection of 3" (76 mm) or less



Manual Wall Stop and Holder

## Product Specifications

---

**Certifications:** - Meets ANSI A156.16 for L01351

**Diameter:** - 2-1/4" (57 mm)

**Projection:** - 3-25/32" (95 mm)

**Keeper:** - 25/32" x 1-1/2" (20 mm x 38 mm)

**Material:** - Cast brass with black rubber bumper

**Finishes:** - US3, US10, US10B, US15, US26, US26D

**Fasteners:** - One (1) #10 x 1 OPHWS, one (1) plastic anchor, one (1) 5/16-18 lead anchor, one (1) 5/16-18 x 2-1/2" threaded stud, and one (1) 5/16-18 x 2-1/2" combo threaded stud

**Engaged Projection:** - 5-11/16" (145 mm)