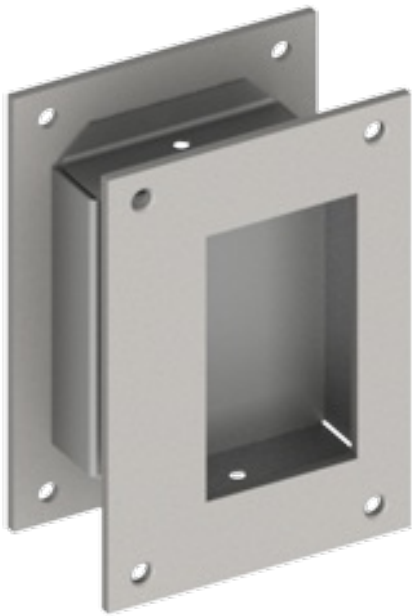


**Product Information**

---

**Note:** - U/M - Consists of two (2) 15C pulls mounted BTB

Flush Pull Set



**Product Specifications**

---

- Face:** - 3-1/2" x 5" (89 mm x 127 mm)
- Opening:** - 1-3/4" x 3-1/16" (45 mm x 78 mm)
- Projection:** - 1/8" (3 mm)
- Cup clearance:** - 3/4" (19 mm)
- Fasteners:** - (4) 6 - 32 OPHMS w/ sex nuts & bolts
- Finishes:** - US32D
- Door thickness:** - 1-3/4" (45 mm) - standard
- Materials:** - Stainless steel