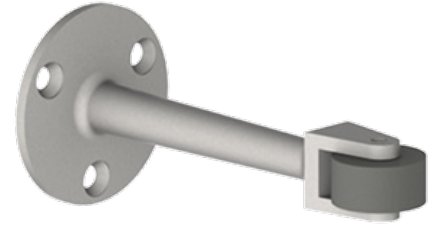


271W

Roller Bumper

Notes:

- For use when two doors swing into each other at right angles (back to back)
- Prevents damage to the door and door hardware



PRODUCT SPECIFICATIONS

BASE:

- 2" (51 mm)

PROJECTION:

- 4-1/2" (114 mm)

MATERIALS:

- Cast brass with grey rubber roller

FINISHES:

- US3, US10, US10B, US26, US26D

FASTENERS:

- Three (3) #10 x 1" FPHWS and three plastic anchors

CERTIFICATION:

- Meets ANSI A156.16 for L02191