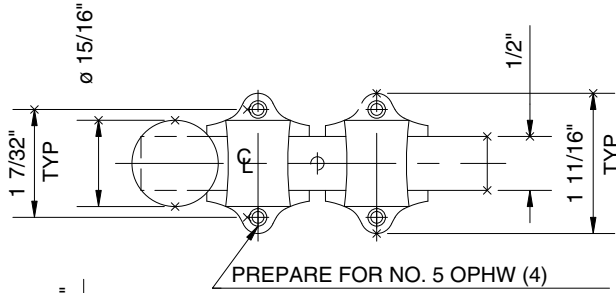
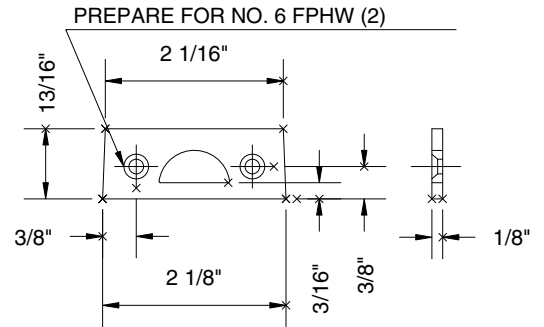
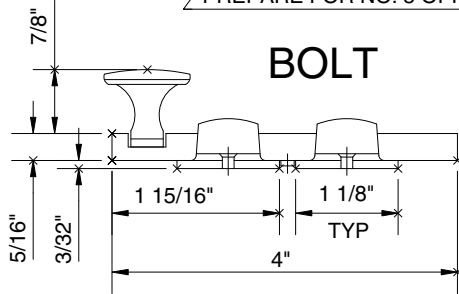


279D

REV 1
PART NO. 279D

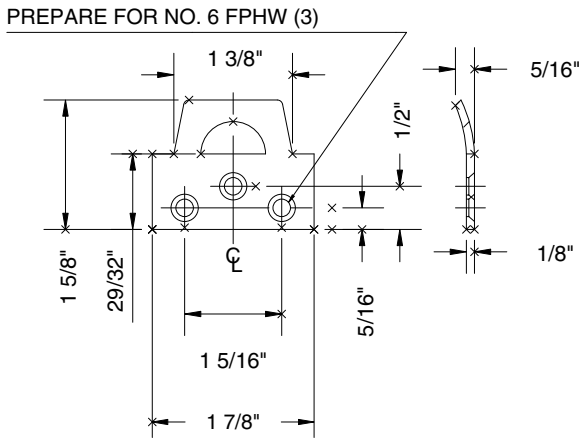


BOLT

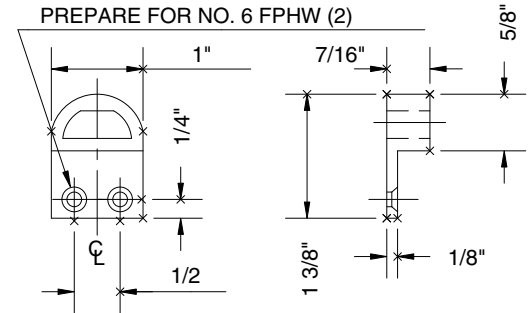


STRIKE

- NOTES:
 1. BOLT HAS A 3/8" THROW
 2. STRIKE CUTOUT MUST ACCEPT BOLT.



STAMPED STRIKE



CAST STRIKE

DO NOT SCALE THIS DRAWING -- TOLERANCES ON FRACTIONS ±.015" ON DECIMALS ±.005" EXCEPT AS NOTED

PACKAGING & FINISH INFORMATION	NO	REVISIONS	BY	DATE
FASTENERS: (PACKAGED BY HAGER)	1	PER ECO TA02044	JAH	11/21/02
NO. 5 X 3/4" OPHW (4)	2			
NO. 6 X 3/4" FPHW (5)	3			



139 Victor St.
St. Louis, MO 63104

SPECIFICATIONS
CAST & STAMPED
BRASS

DRAWN BY	SCALE	DATE
DLY	1/2	4-11-94

DESCRIPTION:
DUTCH
DOOR
BOLT

FINISH	COMPONENT NO.
UNF	269-3429
26D	269-3435
US3	269-3437

J:279D

PART NO.
279D

REV
1