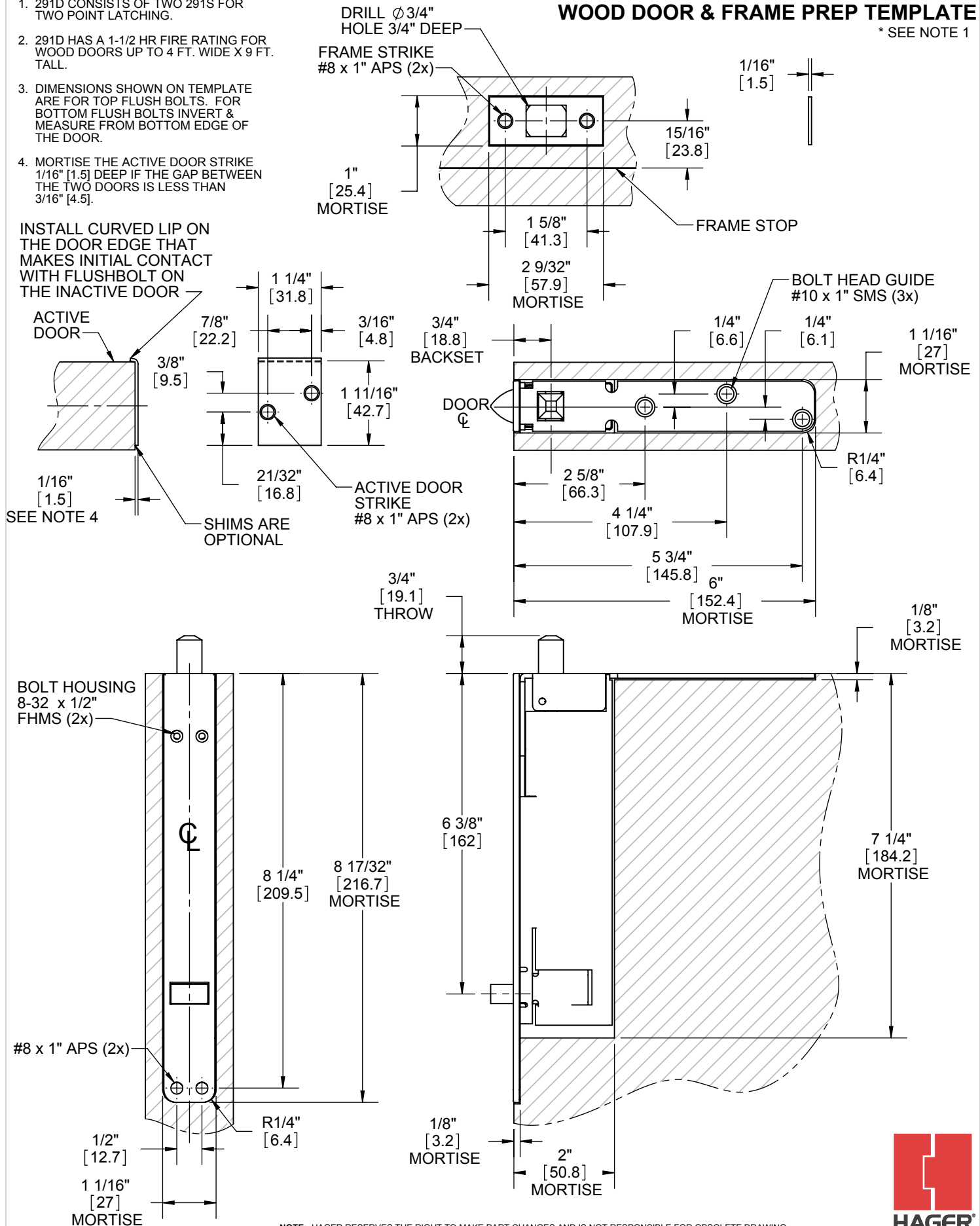


NOTES:

- 291D CONSISTS OF TWO 291S FOR TWO POINT LATCHING.
- 291D HAS A 1-1/2 HR FIRE RATING FOR WOOD DOORS UP TO 4 FT. WIDE X 9 FT. TALL.
- DIMENSIONS SHOWN ON TEMPLATE ARE FOR TOP FLUSH BOLTS. FOR BOTTOM FLUSH BOLTS INVERT & MEASURE FROM BOTTOM EDGE OF THE DOOR.
- MORTISE THE ACTIVE DOOR STRIKE 1/16" [1.5] DEEP IF THE GAP BETWEEN THE TWO DOORS IS LESS THAN 3/16" [4.5].

291S/291D* AUTOMATIC FLUSHBOLT WOOD DOOR & FRAME PREP TEMPLATE

* SEE NOTE 1



NOTE: HAGER RESERVES THE RIGHT TO MAKE PART CHANGES AND IS NOT RESPONSIBLE FOR OBSOLETE DRAWING ERRORS. TO ENSURE YOUR DRAWING IS CURRENT VISIT WWW.HAGERCO.COM.



NOT TO SCALE
DIMENSIONS IN [] ARE IN MILLIMETERS