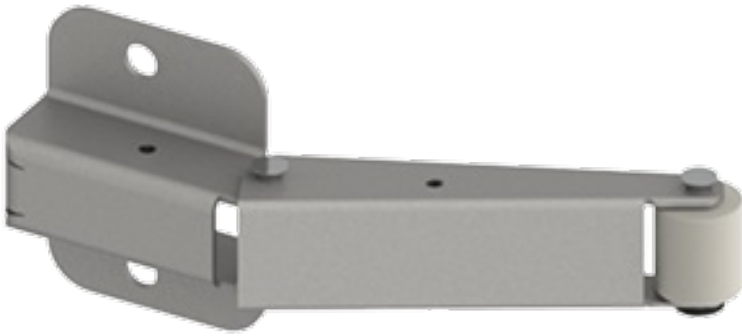


Product Information

- Notes:**
- Used when it is possible for the inactive door to be opened before the active door
 - For use on pairs of door with astragals
 - For use in conjunction with a 297D or 298D coordinator
 - Prevents damage to the doors and other hardware
 - Non-handed
 - Carry bar is not required when the inactive door is equipped with automatic or self-latching flushbolts

Carry Bar



Product Specifications

- Plate:** - 1-3/4" x 2-1/4" (45 mm x 57 mm)
- Materials:** - Brass and stainless steel
- Finishes:** - USP, US3, US10, US10B, US15, US32, US32D
- Projection:** - 25/32" (20 mm)
- Fasteners:** - Two (2) 12 - 24 x 3/4" PPHMS w/ sex nuts
- Certifications:** - ANSI/BHMAA156.3 Type #27
- Base:** - 1-3/4" x 2-1/4" (54 mm x 57 mm)