

## 3340 Privacy Set Lever

### Applications:

- Multi-Family
- Assisted Living Facilities
- Hospitality

### Features:

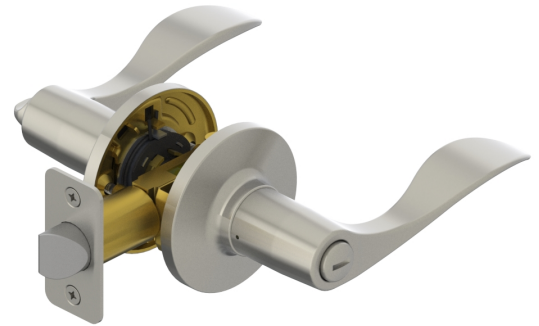
- Field reversible
- Thru-bolt design for ease of installation
- Standard 4-way latch provides versatility for most retrofit applications

### Warranty:

- One-year warranty

### Function:

- Privacy



## PRODUCT SPECIFICATIONS

### CERTIFICATIONS:

- BHMA Certified ANSI A156.2, Grade 2 test standards
- ADA Compliant ANSI A117.1

### EXPOSED TRIM:

- Levers: Cast zinc
- Rose: Wrought brass

### ROSE DIAMETER:

- 2-9/16" (65mm)

### DOOR THICKNESS:

- 1-3/8" to 1-3/4" (35mm to 45mm)

### BACKSET:

- 2-3/8" to 2-3/4" (60mm to 70mm) adjustable backset

### LATCHBOLT:

- 1/2" (13mm) Throw-- Zinc
- 1" x 2-1/4" (25mm x 57mm) faceplate
- 4-way Latch Design (Square Corner and Round Corner provided)

### STRIKES:

- Round Corner Full Lip - Standard
- Square Corner Full Lip and Tee Strike available separately

### LEVER OPTIONS:

- Archer, August, Johnston, Withnell

### FINISHES:

- US3\* (605), US10B (613), US15 (619) US26\* (625), US26D (626)
- \* Non-stocked finishes

### FUNCTION:

- 40-Privacy

### DOOR PREP:

- 2-1/8" diameter (bore), Latch hole: 1" diameter (cross bore)

### PACKAGING:

- Box packed

### WARRANTY:

- One-year