

## 3417 Single Dummy

### Grade 1 Cylindrical Lever

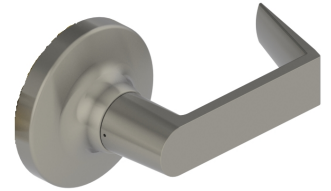
#### Applications:

- Extra Heavy-Duty Commercial - Industrial - Institution

- No exposed mounting screws
- Non-handed

#### Function:

- Dummy - single



## PRODUCT SPECIFICATIONS

#### CERTIFICATIONS:

- BHMA Certified ANSI A156.2, Series 4000, Grade 1
- ADA Compliant ANSI A117.1 Accessibility Code
- ANSI A250.13 Severe Windstorm Resistant Component
- UL/cUL Listed for all functions up to 3 hours for "A" label single doors (for double door application, UL/cUL Listed when used with 3/4" latchbolt)
- UL10C Positive Pressure Rated
- UL10B Neutral Pressure Rated
- Lifetime warranty

#### EXPOSED TRIM:

- Lever: Cast zinc
- Rose: Wrought brass or stainless steel

#### ROSE DIAMETER:

- 3-17/32" (90 mm) levers; 3" (76 mm) knobs

#### FINISHES:

- US3, US4, US10, US10B, US26, US26D

#### FUNCTIONS:

- 17 - Dummy

#### OPTIONS:

- Lead lined
- Tactile knurling

#### STANDARD DOOR PREP:

- 2-1/8" (54 mm) diameter with thru-bolt holes (cross bore)
- Latch hole - 1" (25 mm) diameter (edge bore)

#### LEVER OPTIONS:

- Archer, August, Withnell levers

#### INSTALLATION:

- Only two screws needed to fully secure inside and outside assemblies to the door
- Screws will ratchet tight letting installer know the lockset is properly tightened
- Roses and levers snap on in seconds