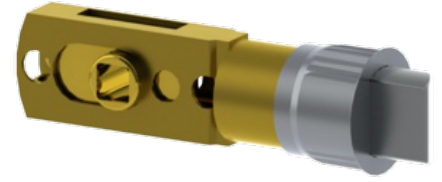


3914

2-3/8" (60 mm) - 2-3/4" (70 mm)
Adjustable Backset
Spring Latch



Note:

- For use with Passage/Privacy functions

PRODUCT SPECIFICATIONS

FACEPLATE:
- Square corner

FACEPLATE DIMENSIONS:
- 1" x 2-1/4" (25 mm x 57 mm)