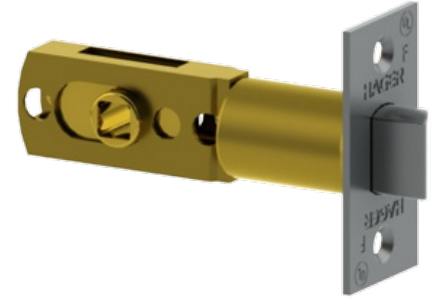


3951

2-3/8" (60 mm) - 2-3/4" (70 mm)
Adjustable Backset
Spring Latch - Standard

Note:

- For use with Passage/Privacy functions



PRODUCT SPECIFICATIONS

FINISHES:

- US3, US4, US10, US10B, US26, US26D

FACEPLATE:

- Square corner

FACEPLATE DIMENSIONS:

- 1" x 2-1/4" (25 mm x 57 mm)

FUNCTIONS:

- 40 Privacy, 10 Passage