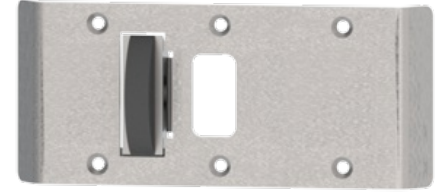


## 455

Combination Rescue Door Stop  
and Two Way Strike Plate -  
Center Hung Doors



**Material:**

- Brass

### PRODUCT SPECIFICATIONS

**DESCRIPTION:**

- For center hung doors
- ANSI A1882
- To be used with Hager 510, 511, and 512 pivots
- Handed (Specify when ordering)
- Door release allows doors to be opened in both directions without damage to frame
- Standard latchbolt cutout is 1-1/4" x 11/16" (32 mm x 17 mm)
- Standard strike plates are optimized for cylindrical locks/latches mounted on 1-

3/4" thick doors  
- Mortise lock applications require special latch cutout location (consult specific manufactures for variations of cutout dimensions)

### PRODUCT SIZE OPTIONS

ITEM NO.	FACE PLATE (INCHES)	FACE PLATE (MM)	GAUGE OF METAL	HOLE COUNT	SCREW SIZE
456	6 3/4 x 2 3/4	171 x 70	0.093	6	1/2 x 8-32 FH
455	5 3/4 x 2 3/4	146 x 70	0.093	6	1/2 x 8-32 FH