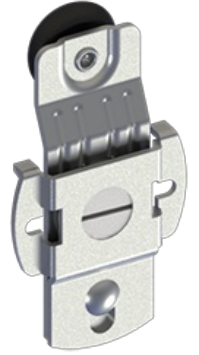


9400

Micro Adjust Hanger

Notes:

- Side mounted with precise cam adjustment
- Hanger is stamped "A" for easy identification
- For use on doors weighing up to 60 lbs (27 kg)
- For use with 9810, 9820, and 9840 track
- For use with 9810, 9820, and 9840 trackA offset of 3/8" (10 mm)



PRODUCT SPECIFICATIONS

MATERIALS:

- Zinc plated steel with molded Celcon wheels

WHEEL:

- 7/8" (22 mm) diameter

GAUGE:

- 0.075" (2 mm)