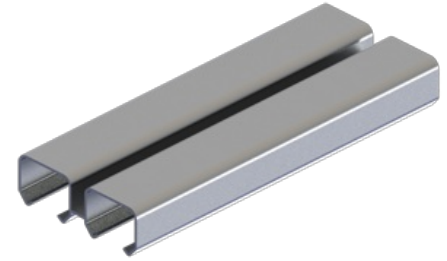


9602

Heavy Duty Aluminum Double Box Track



Notes:

Interchanges with:

- Jump proof double twin channel design
- Refer to series page for weight capacities
- For 1-3/4" applications, both doors are off center. Use 9607 on the front door and 9608 on the rear door. Also use 9909 floor guide.

PRODUCT SPECIFICATIONS

NOTES:

Interchanges with:

- Jump proof double twin channel design
- Refer to series page for weight capacities
- For 1-3/4" applications, both doors are off center. Use 9607 on the front door and 9608 on the rear door. Also use 9909 floor guide.
- Cox 15-220 Series
- Lawrence 581 Track, HD520 Hardware
- For 1-3/4" applications, both doors are off center. Use 9607 on the front door and 9608 on the rear door. Also use 9909 floor guide.

MATERIAL:

- Extruded Aluminum

GAUGE:

- 0.050" (1.3 mm)

TRACK:

- 1-1/16" (27 mm) x 3-1/8" (79 mm)

LENGTHS:

- 46" (1168 mm) to 142" (3607 mm)

PACKAGING:

- Bulk