

## 9801

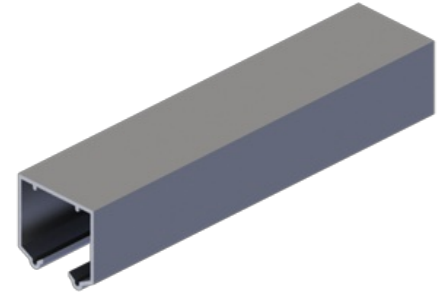
### Heavy Duty Aluminum Aluminum Box Track

#### Notes:

- Interchanges with: Stanley 57/58
- For doors up to 250 lbs (113 kg)
- Jump proof twin channel design
- For doors 1-3/8" - 1-3/4" (35 mm - 44 mm) thick
- Track is extruded aluminum jump-proof style with "V" shaped rails
- Hangers have four 1-1/4" (32 mm) diameter wheels

#### Description:

- Conforms to ANSI A156.14/ Type: D8681, D8711



## PRODUCT SPECIFICATIONS

#### PACKAGED SETS:

- 9878-72  
72" (1829 mm) Pocket Door Set for 3' (914 mm) door - 9778-96
- 96" (2438 mm) Pocket Door Set for 4' (1219 mm) door

#### LENGTHS:

- 9801-72  
72" (1829 mm) - 9801-96  
96" (2438 mm) - 9801-120  
120" (3048 mm) - 9801-144  
144" (3658 mm) - 9801-192  
192" (4877 mm)

#### MATERIAL:

- Extended aluminum

#### GAUGE:

- 0.075" (2 mm)

#### TRACK:

- 1-5/8" x 1-3/4" (41 mm x 44 mm)

## PRODUCT SIZE OPTIONS

PART #	DESCRIPTION
9878-72	72" (1829 mm) Pocket Door Set for 3' (914 mm) Door
9878-96	96" (2438 mm) Pocket Door Set for 4' (1219 mm) Door