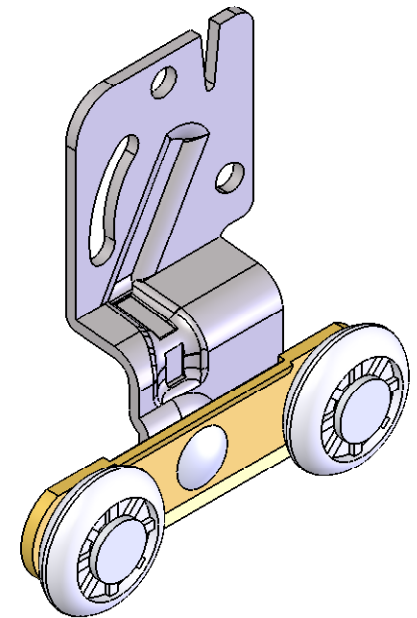
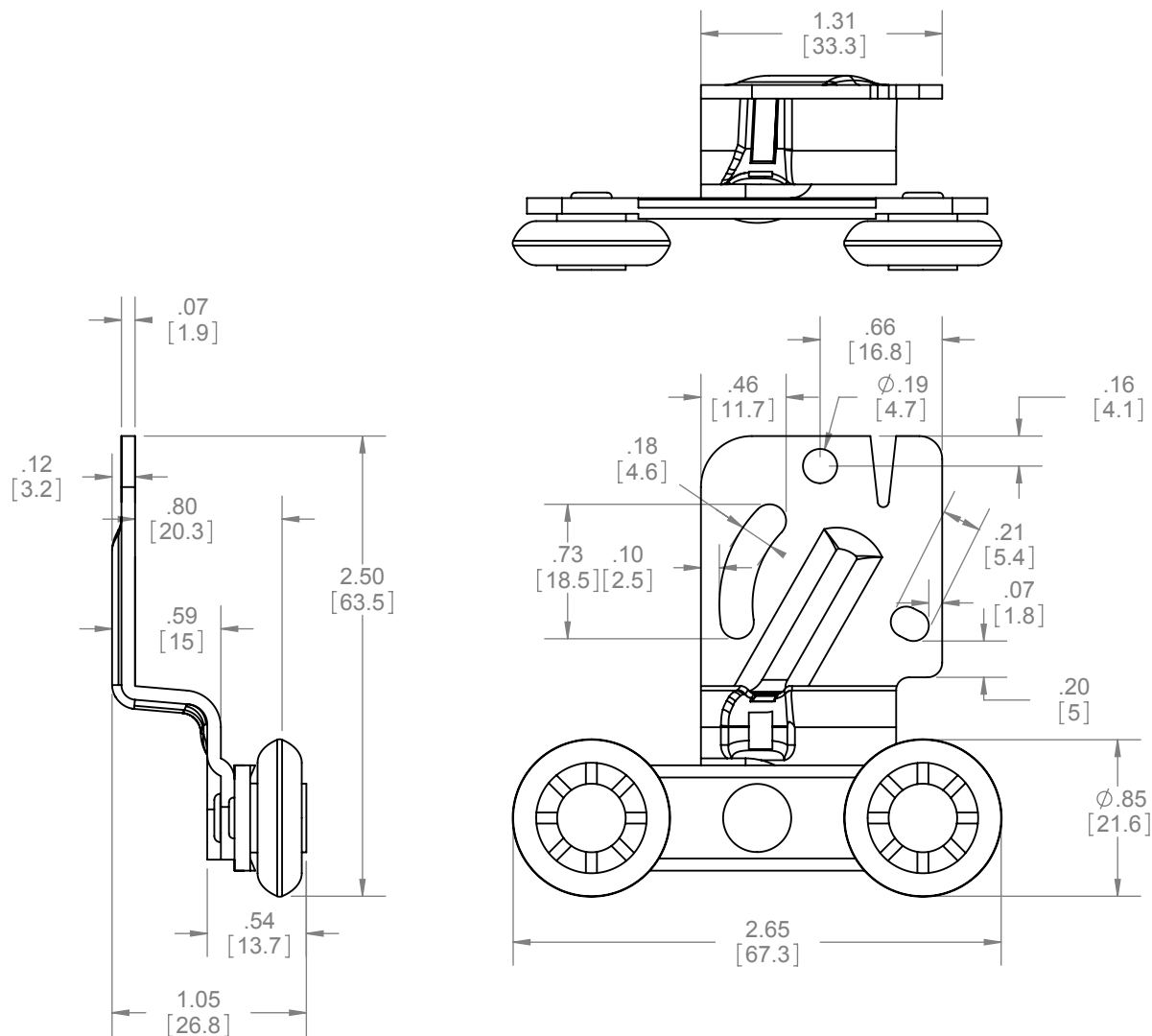


REV.	DESCRIPTION	ECO NO.	DATE
01	NEW DRAWING FOR WEB		3/24/2008



- NOTES:
- FOR USE ON DOORS WEIGHING UP TO 60 LBS.
 - FOR USE WITH 9810, 9820, 9830 AND 9840 TRACK
 - SIDE MOUNTED WITH SLOT ADJUST OFFSET
 - HANGER IS STAMPED "B" FOR 11/16" OFFSET



PROPRIETARY & CONFIDENTIAL

THE INFORMATION CONTAINED IN THIS DRAWING IS THE SOLE PROPERTY OF HAGER COMPANIES. ANY REPRODUCTION IN PART OR AS A WHOLE WITHOUT THE WRITTEN PERMISSION OF HAGER COMPANIES IS PROHIBITED.

HAGER RESERVES THE RIGHT TO MAKE DESIGN CHANGES WITHOUT NOTICE. CALL HAGER ENGINEERING AT 1-800-325-9995 FOR THE LATEST REVISION DATE OF TEMPLATE.

MATERIAL	STEEL W/ CELCON WHEELS
FINISH	ZINC
DO NOT SCALE DRAWING	

DRAWN	NJANSEN	3/11/2008
ENG. APPR.	M MCRAE	3/24/2008
Q.A.		
TOLERANCES:		
FRACTIONAL: $\pm 0.015"$		
ANGULAR: MACH: $\pm 1^\circ$ BEND: $\pm 1^\circ$		
TWO PLACE DECIMAL: $\pm 0.01"$		
THREE PLACE DECIMAL: $\pm 0.004"$		

9202		DOUBLE WHEEL HANGER B OFFSET	
SIZE	DWG. NO.	REV.	
A	S-SD00073	01	
SCALE: 1:2	WEIGHT: 0.11	SHEET 1 OF 1	