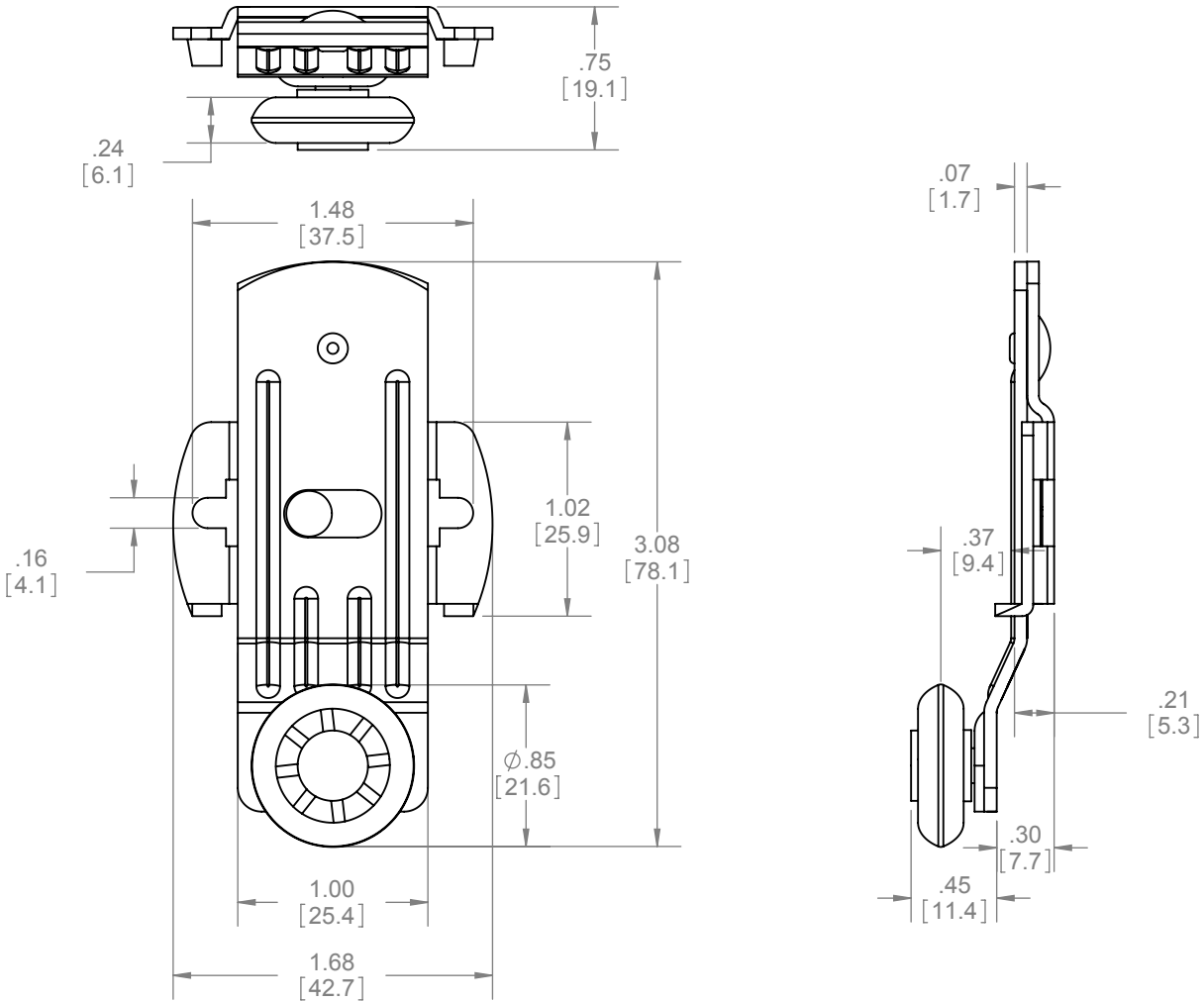
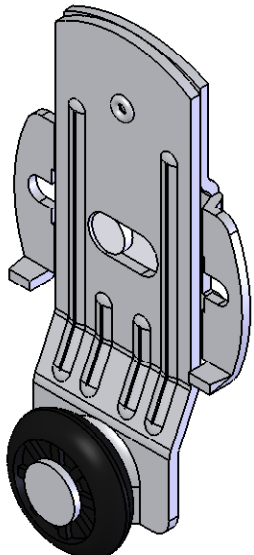



REVISIONS		
REV.	DESCRIPTION	DATE
01	NEW DRAWING FOR WEB	3/17/2008



- NOTES:
- SIDE MOUNTED WITH PRECISE CAM ADJUSTMENT
 - HANGER IS STAMPED "A" FOR 3/8" (9.5mm) OFFSET
 - FOR USE ON DOORS WEIGHTING UP TO 60LBS. (27kg)
 - FOR USE WITH 9810, 9820, 9830 AND 9840 TRACK

 <div>PROPRIETARY & CONFIDENTIAL THE INFORMATION CONTAINED IN THIS DRAWING IS THE SOLE PROPERTY OF HAGER COMPANIES. ANY REPRODUCTION IN PART OR AS A WHOLE WITHOUT THE WRITTEN PERMISSION OF HAGER COMPANIES IS PROHIBITED.</div>	HAGER RESERVES THE RIGHT TO MAKE DESIGN CHANGES WITHOUT NOTICE. CALL HAGER ENGINEERING AT 1-800-325-9995 FOR THE LATEST REVISION DATE OF TEMPLATE.		DRAWN NJANSEN 12/12/2007		9400 MICRO ADJUST HANGER		
	MATERIAL STEEL W/ CELCON WHEELS		ENG. APPR. M MCRAE 3/17/08				
	FINISH ZINC PLATED		Q.A.		SIZE A DWG. NO. S-SD00018 SCALE:1:1 WEIGHT:0.10 SHEET 1 OF 1		
	DO NOT SCALE DRAWING		TOLERANCES: FRACTIONAL: ±0.015" ANGULAR: MACH: ± 1° BEND: ±1° TWO PLACE DECIMAL: ±0.01" THREE PLACE DECIMAL: ±0.004"				