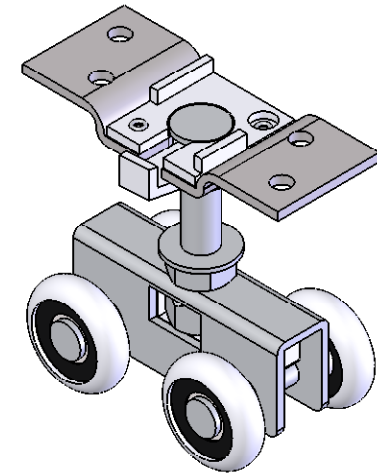
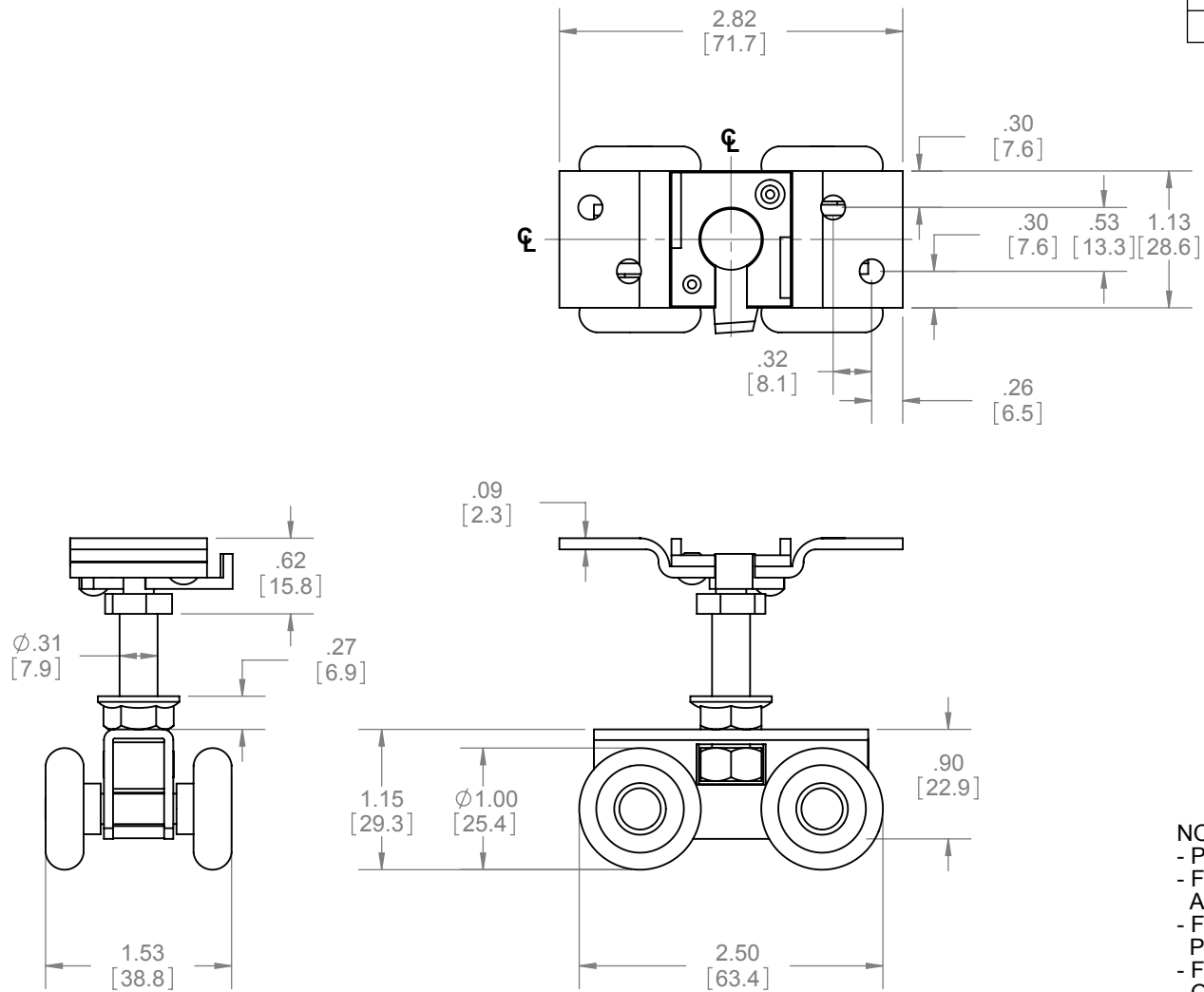


REVISIONS		
REV.	DESCRIPTION	DATE
01	NEW DRAWING FOR WEB	3/24/2008



- NOTES:
- PRE-LUBRICATED CELCON WHEELS
  - FOR DOORS UP TO 125lbs(57kg) FOR BI-FOLD APPLICATIONS
  - FOR DOORS UP TO 250lbs(113kg) FOR BY-PASS AND POCKET APPLICATIONS
  - FOR USE WITH 9821 TRACK
  - QUICK RELEASE FEATURE ALLOWS EASY DOOR HANGING AND REMOVAL

- HARDWARE INCLUDED:
- 4PCS #8 32 x 1" CROSS PAN HEAD SCREW (HEAD PAINTED WHITE)
  - COMBO WRENCH 1/2" AND 7/16"



**PROPRIETARY & CONFIDENTIAL**

THE INFORMATION CONTAINED IN THIS DRAWING IS THE SOLE PROPERTY OF HAGER COMPANIES. ANY REPRODUCTION IN PART OR AS A WHOLE WITHOUT THE WRITTEN PERMISSION OF HAGER COMPANIES IS PROHIBITED.

HAGER RESERVES THE RIGHT TO MAKE DESIGN CHANGES WITHOUT NOTICE. CALL HAGER ENGINEERING AT 1-800-325-9995 FOR THE LATEST REVISION DATE OF TEMPLATE.

MATERIAL	STEEL
FINISH	ZINC PLATED
DO NOT SCALE DRAWING	

DRAWN	NJANSEN	1/29/2008
ENG. APPR.	M MCRAE	3/24/2008
Q.A.		
TOLERANCES:		
FRACTIONAL: $\pm 0.015"$		
ANGULAR: MACH: $\pm 1^\circ$ BEND: $\pm 1^\circ$		
TWO PLACE DECIMAL: $\pm 0.01"$		
THREE PLACE DECIMAL: $\pm 0.004"$		

8825		REV. 01	
FOUR WHEEL BALL BEARING QUICK RELEASE HANGER		S-SD00056	
SIZE A	DWG. NO.	SCALE: 1:1	WEIGHT: 0.28
		SHEET 1 OF 1	