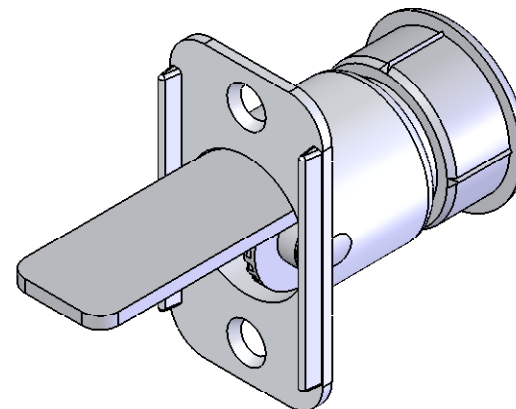
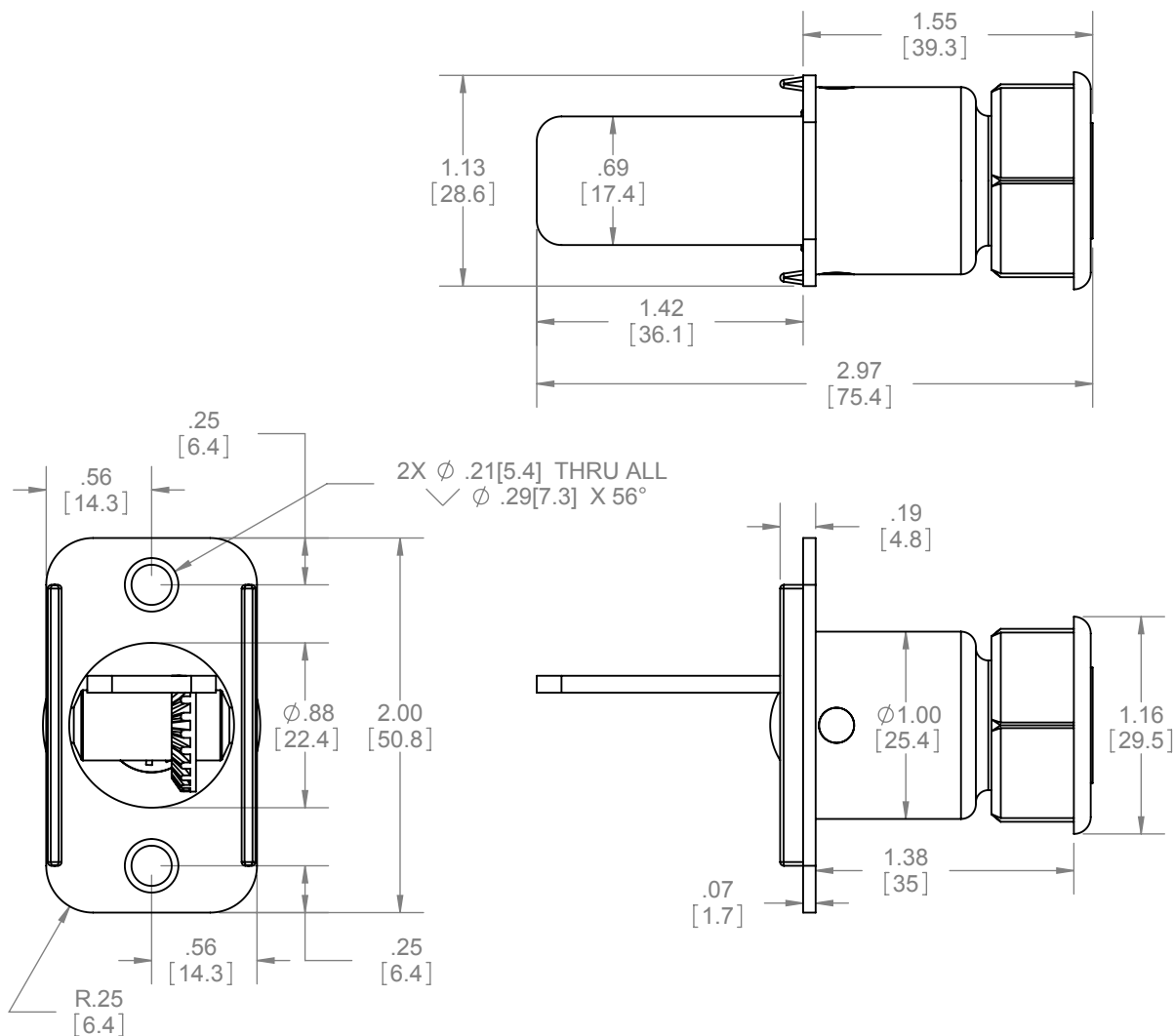


REV.	DESCRIPTION	ECO NO.	DATE
01	NEW DRAWING FOR WEB		3/24/2008



NOTES:  
 - LOCK CYLINDER FITS IN ONE 1"(25.4mm) HOLE  
 - AVAILABLE KEYED ALIKE FOR DOORS 3/4"(19mm) TO 1-3/4"(44mm) THICK

HARDWARE INCLUDED:  
 - 2 PCS #6-32 x 3/4" CROSS FLAT HEAD SCREW  
 - 2 PCS KEY



**PROPRIETARY & CONFIDENTIAL**  
 THE INFORMATION CONTAINED IN THIS DRAWING IS THE SOLE PROPERTY OF HAGER COMPANIES. ANY REPRODUCTION IN PART OR AS A WHOLE WITHOUT THE WRITTEN PERMISSION OF HAGER COMPANIES IS PROHIBITED.

HAGER RESERVES THE RIGHT TO MAKE DESIGN CHANGES WITHOUT NOTICE. CALL HAGER ENGINEERING AT 1-800-325-9995 FOR THE LATEST REVISION DATE OF TEMPLATE.

		DRAWN	NJANSEN	2/6/2008	9268 BY-PASS DOOR KEYED LOCK			
		ENG. APPR.	M MCRAE	3/24/2008				
MATERIAL	STEEL	Q.A.			TOLERANCES: FRACTIONAL: ±0.015" ANGULAR: MACH: ± 1° BEND: ± 1° TWO PLACE DECIMAL: ±0.01" THREE PLACE DECIMAL: ±0.004"			
FINISH	ZINC PLATED							
DO NOT SCALE DRAWING					SIZE	DWG. NO.	REV.	
					A	S-SD00062	01	
					SCALE: 1:2	WEIGHT: 0.27	SHEET 1 OF 1	