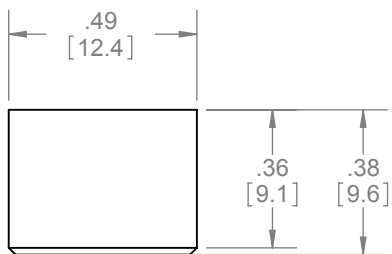
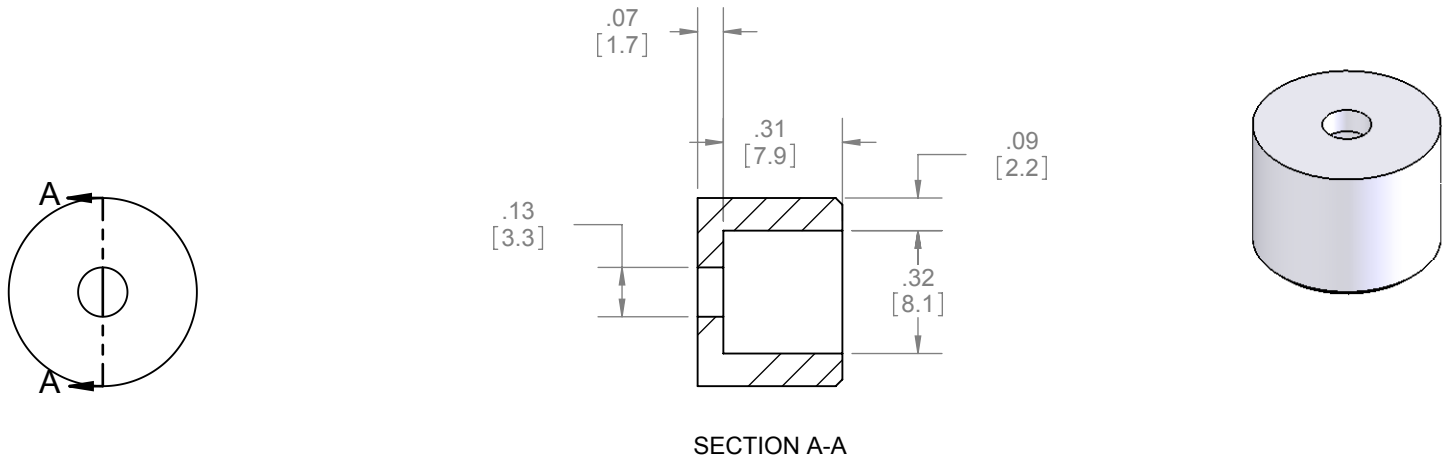



REVISIONS		
REV.	DESCRIPTION	DATE
01	NEW DRAWING FOR WEB	3/20/2008



HARDWARE INCLUDED:
- 1PC #8-32 3/4" CROSS PAN HEAD SCREW

 HAGER COMPANIES ST. LOUIS, MISSOURI	PROPRIETARY & CONFIDENTIAL	HAGER RESERVES THE RIGHT TO MAKE DESIGN CHANGES WITHOUT NOTICE. CALL HAGER ENGINEERING AT 1-800-325-9995 FOR THE LATEST REVISION DATE OF TEMPLATE.			DRAWN	NJANSEN	1/10/2008	9881 BUMPER		
	THE INFORMATION CONTAINED IN THIS DRAWING IS THE SOLE PROPERTY OF HAGER COMPANIES. ANY REPRODUCTION IN PART OR AS A WHOLE WITHOUT THE WRITTEN PERMISSION OF HAGER COMPANIES IS PROHIBITED.				ENG. APPR.	M MCRAE	3/20/2008			
			MATERIAL	RUBBER	Q.A.			TOLERANCES: FRACTIONAL: ±0.015" ANGULAR: MACH: ± 1° BEND: ±1° TWO PLACE DECIMAL: ±0.01" THREE PLACE DECIMAL: ±0.004"		
			FINISH	NONE						
			DO NOT SCALE DRAWING							
			SIZE	DWG. NO.		REV.				
			A	S-SD00042		01				
			SCALE:4:1		WEIGHT: 0.00		SHEET 1 OF 1			