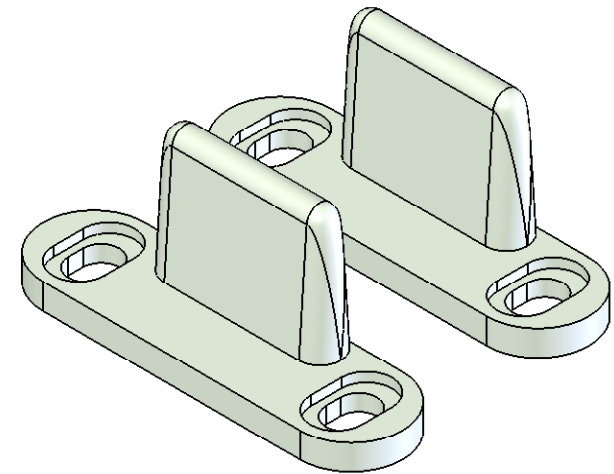
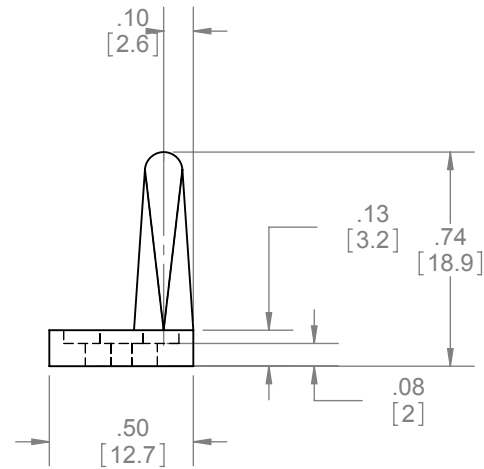
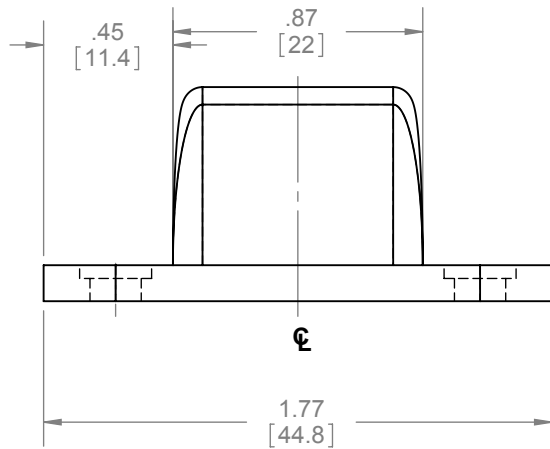
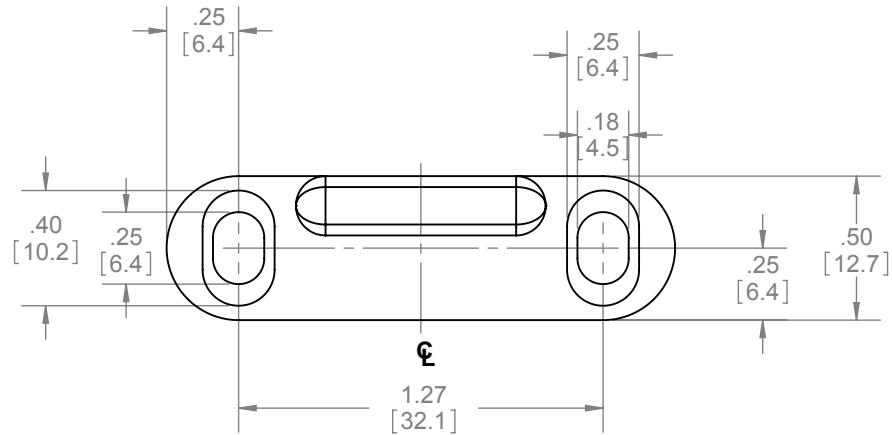


REVISIONS		
REV.	DESCRIPTION	DATE
01	NEW DRAWING FOR WEB	3/20/2008



NOTES:  
- MOUNTS ON FLOOR

HARDWARE INCLUDED:  
- 4PCS #8-32 x 3/4" CROSS PAN HEAD SCREW



**PROPRIETARY & CONFIDENTIAL**  
THE INFORMATION CONTAINED  
IN THIS DRAWING IS THE SOLE  
PROPERTY OF HAGER  
COMPANIES. ANY REPRODUCTION  
IN PART OR AS A WHOLE WITHOUT  
THE WRITTEN PERMISSION OF  
HAGER COMPANIES IS PROHIBITED.

HAGER RESERVES  
THE RIGHT TO  
MAKE DESIGN  
CHANGES  
WITHOUT NOTICE.  
CALL HAGER  
ENGINEERING AT  
1-800-325-9995  
FOR THE LATEST  
REVISION DATE  
OF TEMPLATE.

MATERIAL	ABS PLASTIC
FINISH	NONE
DO NOT SCALE DRAWING	

DRAWN	NJANSEN	1/10/2008
ENG. APPR.	M MCRAE	3/20/2008
Q.A.		
TOLERANCES: FRACTIONAL: $\pm 0.015"$ ANGULAR: MACH: $\pm 1^\circ$ BEND: $\pm 1^\circ$ TWO PLACE DECIMAL: $\pm 0.01"$ THREE PLACE DECIMAL: $\pm 0.004"$		

9877		TWO PIECE PLASTIC DOOR GUIDE	
SIZE	DWG. NO.	REV.	
A	S-SD00041	01	
SCALE: 2:1	WEIGHT: 0.01	SHEET 1 OF 1	