

1

2

3

4

REV

DATE

EDITOR

ECO NO.

CHANGE DESCRIPTION

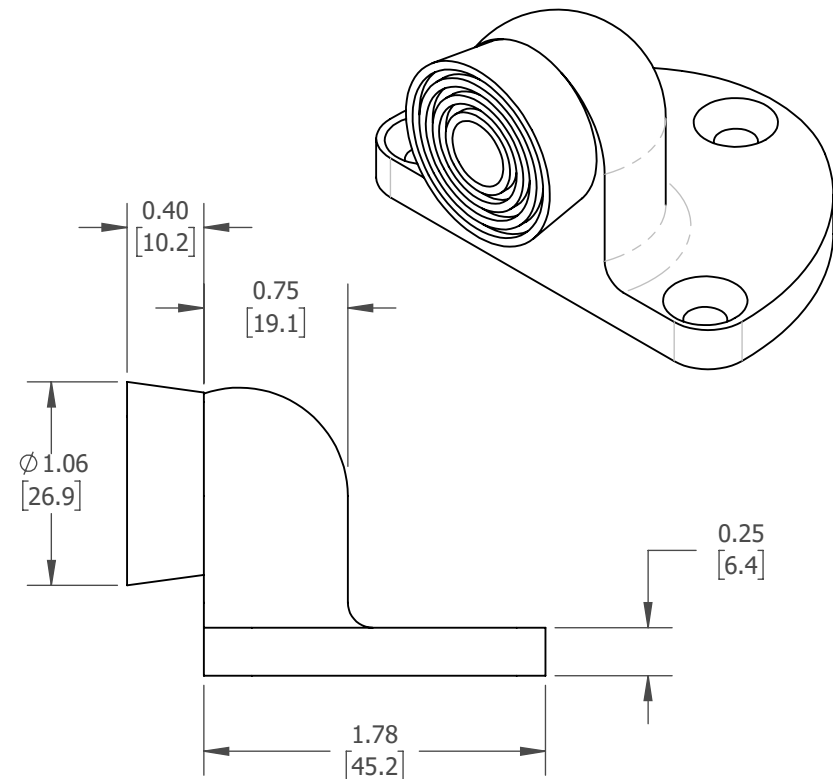
-

08 Jan 2021

MA

R0.565
[14.4]#12-24 x 1" Flat Phillips Head Machine Screw
or #12 x 1-1/4" Flat Phillips Head Wood Screw1.50
[38.1]R0.25
[6.4]2.05
[52.1]1.53
[38.9]1.00
[25.4]2.59
[65.8]

Fasteners Included	Qty.
#12 x 1" Drywall Anchor	3
#12 x 1-1/4" Flat Phillips Head Wood Screw	3
#12-24 x 1/2" x 3/4" Lead Anchor	3
#12-24 x 1" Flat Phillips Head Machine	3



PROPRIETARY & CONFIDENTIAL
THE INFORMATION CONTAINED IN
THIS DRAWING IS THE SOLE
PROPERTY OF HAGER COMPANIES.
ANY REPRODUCTION IN PART OR
AS A WHOLE WITHOUT THE
WRITTEN PERMISSION OF HAGER
COMPANIES IS PROHIBITED.

HAGER RESERVES
THE RIGHT TO MAKE
DESIGN CHANGES
WITHOUT NOTICE.
CALL HAGER
ENGINEERING AT
1-800-325-9995
FOR THE LATEST
REVISION DATE OF
TEMPLATE.

ALL DIMENSIONS REFERENCE UNLESS
TOLERANCE SPECIFIED.

UNITS: INCH = AUTHORITY
[] = MILLIMETER REFERENCE

DO NOT SCALE

DRAWN BY: MA 1/8/2021

ENG. APPR.: Devon Forney 01/08/2021



THIRD ANGLE PROJECTION

MATERIAL:

FINISH: US26D and US10B

WEIGHT: lbs

SERIES NO.

PART NO.

259F

PART DESCRIPTION:

Tri Base Floor Stop Template

DRAWING NO.

T-TA01318

REVISION

-

SHEET SIZE: A

SCALE: 1:1

SHEET 1 OF 1