

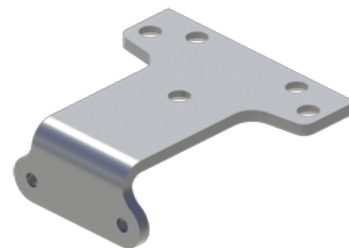


PRODUCT SPECIFICATIONS
For more information visit www.hagerco.com

5909 Parallel Arm Bracket 5100 Series

Parallel Arm Bracket

Applications



PRODUCT SPECIFICATIONS

Box Quantity:
1

Case Quantity:
20

Notes:
Supplied standard with standard hold open closer
Can be used to convert regular or top jamb arm to parallel arm application