



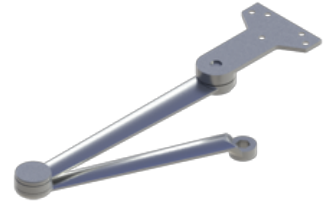
PRODUCT SPECIFICATIONS

For more information visit www.hagerco.com

Extra Heavy Duty Hold Open Arm 5100 Series- 5108

Extra Heavy Duty Hold Open Arm

Applications



PRODUCT SPECIFICATIONS

Box Quantity:

1

Case Quantity:

10

Handing:

Handed parallel arm (specify handing when ordering)

Material:

Forged steel

Notes:

Provides hold open function

Adjustable at the shoe

Friction hold open

Not for use on fire rated doors