

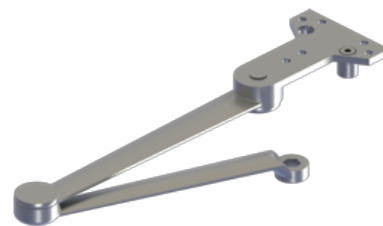


PRODUCT SPECIFICATIONS
For more information visit www.hagerco.com

Extra Heavy Duty Stop Arm 5100 Series- 5125

Extra Heavy Duty Stop Arm

Applications



PRODUCT SPECIFICATIONS

Box Quantity:
1

Case Quantity:
10

Handing:
Non-handed parallel arm

Material:
Forged steel

Notes:
Auxiliary stop in soffit shoe
Can be combined with 5950 spring cushion kit