



PRODUCT SPECIFICATIONS

For more information visit www.hagerco.com

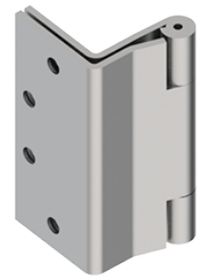
AB7002 3 Knuckle

AB7002

Full Mortise, 3-Knuckle, Swing Clear, Concealed
Anti-Friction Bearing, Standard Weight

Applications

For beveled edge doors, and for use in hospitals or other institutional type buildings.



PRODUCT SPECIFICATIONS

Box Quantity:
3

Case Quantity:
36

Certifications:
ANSI A8122

Fastener Size - Machine:
1/2" x 12-24"

Fastener Size - Wood:
1-1/4" x 12"

Features:
Non-rising removable pin with flush pin and plug.

Finishes:
LS
USP
US3
US10
US10A
US10B
US26
US26D

Gauge:
See Sizing Chart Options

H Height:
See Sizing Chart Options

Hole Count:

Knuckles:
3

Material:
Steel

Notes:
When opened 90°, door projects 3/32" (2 mm) past stop of jamb.
Assembled RH - Reversible to LH.

H Width:
See Sizing Chart Options