



PRODUCT SPECIFICATIONS

For more information visit www.hagerco.com

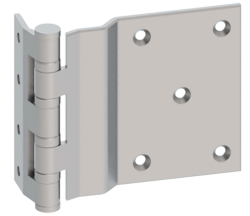
BB1266 5 Knuckle

BB1266

Full Surface, 5-Knuckle, Swing Clear, Ball Bearing,
Heavy Weight

Applications

For use in hospitals or other institutional type buildings.
For beveled surface leaves.



PRODUCT SPECIFICATIONS

Box Quantity:
3

Case Quantity:
12

Certifications:
ANSI A8321

Fastener Size - Machine:
2" x 1/4-20" FH

Fastener Size - Wood:
1/2" x 1/4-20" FH

Features:
Four ball bearings. Non-rising removable pin with button tip and plug.

Finishes:
USP
US10
US10A
US10B
US26D

Gauge:
See Sizing Chart Options

H Height:
See Sizing Chart Options

Hole Count:

Knuckles:
5

Material:
Steel with Steel Pin

Notes:
When opened 90°, door projects 11/64" (4 mm) past stop of jamb.
Reversible (specify handing).

H Width:
See Sizing Chart Options