



## PRODUCT SPECIFICATIONS

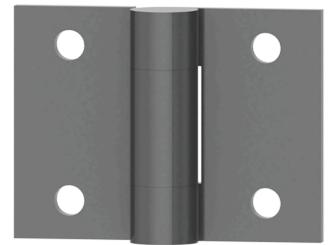
For more information visit [www.hagerco.com](http://www.hagerco.com)

# 990 Full Surface HW Prison Utility Hinge

Full Surface Heavy Weight Prison Utility Hinge

## Applications

For use on small doors, access doors, and observation shutters.



## PRODUCT SPECIFICATIONS

Box Quantity:  
2

Case Quantity:  
10

Certifications:  
ANSI A8383

Fastener Size - Machine:  
1" x 16-3/8" TORX

Features:  
Plain bearing. Welded pin. Torx button head bolt.

Finishes:  
USP

Gauge:  
See Sizing Chart Options

H Height:  
See Sizing Chart Options

Hole Count:

Knuckles:  
3

Material:  
Steel with Steel Pin

Maximum Door Weight:  
2 hinges will support 150 lbs.

H Width:  
See Sizing Chart Options