



PRODUCT SPECIFICATIONS

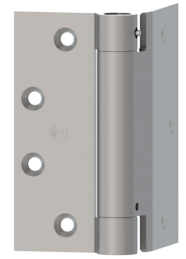
For more information visit www.hagerco.com

1253

1253

Half Surface, Spring Hinge, Single-Acting, Standard Weight

Applications



PRODUCT SPECIFICATIONS

Box Quantity:
3

Case Quantity:
48

Certifications:
ANSI K81081F

Fastener Size - Machine:
Door Leaf: 2" x 1/4-20" with grommet nuts. Jamb Leaf: 1/2" x 12-24".

Finishes:
USP
US3
US4
US10
US10A
US10B
US26D

Gauge:
See Sizing Chart Options

H Height:
See Sizing Chart Options

Hole Count:

Knuckles:
3

Material:
Steel with Steel Components

Notes:
For maximum versatility use all spring hinges or a combination of spring and ball bearing hinges. Do NOT use plain bearing hinges.
For automatic closing door.
Meets codes for hotels, motels, institutions, and commercial buildings.
Strong wind conditions, drafts, carpeting drag, twisted/misaligned frames, or weatherstripping on doors may require additional spring hinges.
Full spring tension may not be required on all hinges.
Thru-bolts and grommets for wood door applications.

H Width:
See Sizing Chart Options