



PRODUCT SPECIFICATIONS
For more information visit www.hagerco.com

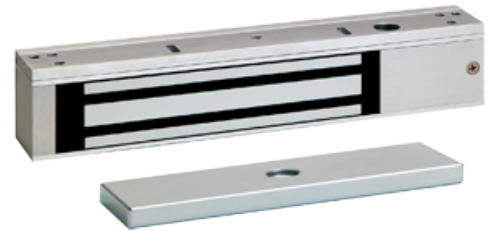
2941 - Single 600 lbs holding force

2941

Applications

For interior door traffic control where physical attack is not a concern

For system integrators, distributors, installers, and building owners presently using low cost import or private label brand access control hardware



PRODUCT SPECIFICATIONS

Case Quantity:
4

Certifications:
ANSI/BHMA A156.23 GRADE 1 Compliant

Electrical Specifications:
500mA @ 12VDC | 250mA @ 24VDC - Power Input (Field Selectable)
SPDT, dry 500mA @ 30VDC - Door Status Sensor
SPDT, dry 2A @ 30VDC - Lock Status Sensor

Features:
Interlocking quick mount assembly reduces installation time
Door Status Sensor
Lock Status Sensor
Wire access chamber with terminal block
PC board with voltage and current spike protection, instant release
anti-residual magnetism circuit

Finishes:
ALM

Holding Force:
600 lbs

LED Indicators:
Red - Energized & Unsecured
Green - Energized & Secure

Mounting Kits:
2-679-0101 - Top Jamb Kit
2-679-0103 - Glass Armature Mounting Kit
2-679-0106 - Angle Bracket (cut to fit 2941)
2-679-0107 - Stop Filler Plate (field cut for 2941)
2-679-0108 - Stop Filler Plate (field cut for 2941)

Product Name:
Magnetic Lock 600lbs Holding Force

Size:
Lock: 9-7/8" (l) x 2" (h) x 1" (d)
Armature: 7-5/16" (l) x 1-1/2" (h) x 1/2" (d)

Warranty:
1 Year