



PRODUCT SPECIFICATIONS

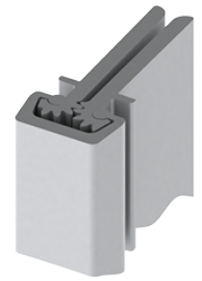
For more information visit www.hagerco.com

1200-600XHD

Concealed Leaf Extra Heavy Duty For doors from 1-3/4" to 2-3/8" thick.

Applications

Lead lined model for hospital x-ray room doors with double row of fasteners to straddle lead (Specify "LL")
Frame and door leaf alignment ribs for proper hinge and door location



PRODUCT SPECIFICATIONS

Clearance:
15/32" (12 mm) hinge side plus standard lockside clearance

Door Reinforcement:
None required to 200 lbs, use 16 gauge channel at higher weight

Door Thickness:
1-3/4" to 2-1/4" thick

Electric Modifications:
Power Transfer Preparation (EPT 2) or (EPT 10)
Electric Through-Wire (ETW)

Fasteners:
1/4"-20 Dril-Kwik® fasteners or optional 1/-14 x 11/2" wood fasteners

Features:
Strong enough to swing doors heavier than 600 lbs., wider than 4 feet, and taller than 10 feet. Extra heavy duty for heavy, high frequency doors or extremely heavy, low frequency doors; for doors 1-3/4" (45 mm) to 2-3/8" (60 mm) thick.
Lead lined model for hospital x-ray room doors with double row of fasteners to straddle lead (Specify "LL")
Frame and door leaf alignment ribs for proper hinges and door location

Frame Reinforcement:
Frame reinforcement recommended for doors in excess of 200 lbs and 3 feet in width

Length Options:
Standard sizes include:
83" (2108 mm)
95" (2413 mm)
119" (3023 mm)
Custom lengths available

Material:
Aluminum 6063-T6

Maximum Door Thickness:
2-1/4"

Notes:
EPD: Roton Continuous Hinges Environmental Product Declaration

Warranty:
All Roton products have a lifetime warranty. When ordering electric Roton, the electric portion of the hinge has a one-year warranty.