

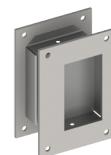


PRODUCT SPECIFICATIONS  
For more information visit [www.hagerco.com](http://www.hagerco.com)

## 25N

Flush Pull Set

Applications



### PRODUCT SPECIFICATIONS

Box Quantity:

1

Case Quantity:

10

Category:

Flush Cup Pulls

Certifications:

Meets ANSI A156.6 for J403 pulls

Cup Clearance:

3/4" (19 mm)

Door Thickness:

1-3/4" (44 mm) standard

Fasteners:

Two 6-32 OPHMS sex nuts and bolts

Finishes:

US3, US4, US10, US10B, DBZ, US26, US26D, US28, US32D

Material:

Aluminum, Brass, Bronze, Stainless Steel

Notes:

Face: 3-1/2" x 5" (89 mm x 127 mm)

Opening 1-3/4" x 3-1/16" (45 mm x 78 mm)

Consists of two (2) 15N pulls mounted back to back

Projection:

1/8" (3 mm)