

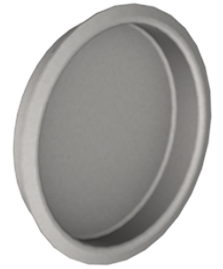


PRODUCT SPECIFICATIONS  
For more information visit [www.hagerco.com](http://www.hagerco.com)

## 2630 - Flush Cup Pull

Flush Cup Pull

Applications



### PRODUCT SPECIFICATIONS

Case Quantity:  
50

H Depth:  
11/32" (9 mm)

H Diameter:  
Overall 2-7/16" (62 mm), Finger pull 2-1/16" (52 mm)

Finger Pull Diameter:  
2-1/16" (52 mm)

Finishes:  
US3, US4, US5, US10A, US15, US15A, US26, US26D, ABA

Material:  
Solid brass

Notes:  
Crossover from SDH section

Projection:  
3/32" (2 mm)

Pull Clearance:  
11/32" (9 mm)

Use:  
For use with bi-fold, by-pass, or pocket door applications

Website Note:  
Built-in prong design eliminates the need for screws or brads