



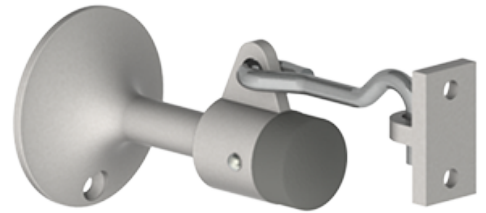
PRODUCT SPECIFICATIONS

For more information visit www.hagerco.com

256W

Manual Wall Stop & Holder

Applications



PRODUCT SPECIFICATIONS

Box Quantity:
5

Case Quantity:
50

Category:
Wall Stops & Holders

Certifications:
Meets ANSI A156.6 for L01341

H Diameter:
2-1/4" (57 mm)

Engaged Projection:
5-11/16" (145 mm)

Fasteners:
One #10 x 1 OPHWS
One plastic anchor
One 5/16-18 lead anchor
One 5/16-18 x 2-1/2" threaded stud
One 5/16-18 x 2-1/2" combo threaded stud

Material:
Cast Brass

Notes:
For use on concrete walls
Ideal for interior and exterior applications
Heavy duty - for use in high traffic areas
Unit functions as a stop, but can serve as a "Hold Open" when hook is manually engaged
Ideal for use with locksets with a projection of 3" (76 mm) or less
Keeper: 25/32" x 1-1/2" (20 mm x 38 mm)

Projection:
3-25/32" (95 mm)