



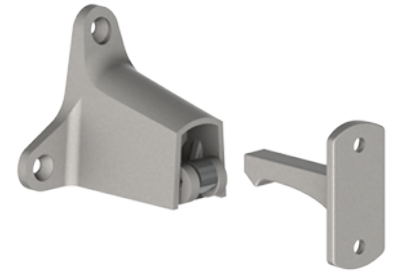
## PRODUCT SPECIFICATIONS

For more information visit [www.hagerco.com](http://www.hagerco.com)

# 326W

## Automatic Wall Stop & Holder

### Applications



## PRODUCT SPECIFICATIONS

Box Quantity:  
5

Case Quantity:  
30

Category:  
Wall Stops & Holders

Certifications:  
Meets ANSI 156.16 for L01291

Fasteners:  
Five #10 x 1" OPHWS, three 10-24 x 1-1/4" FPHMS, and three plastic anchors

Finishes:  
US3, US10, US10B, US26, US26D

Material:  
Cast Brass

Notes:  
For use with wood or metal doors  
Holder is mounted on the door  
Roller is spring loaded to seat on strike - heavy duty rubber pad dampens sound and shock  
Ideal for use with locksets with a projection of 3" (76 mm) or less

Projection:  
Engaged Projection: 3-5/8" (92 mm) wall to door

Strike Base:  
1" x 2-1/16" (25 mm x 52 mm)

Strike Projection:  
2" (51 mm)