



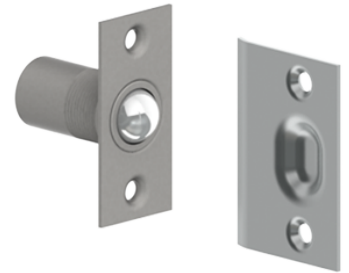
## PRODUCT SPECIFICATIONS

For more information visit [www.hagerco.com](http://www.hagerco.com)

# 321R

## Adjustable Ball Catch with Strike

### Applications



## PRODUCT SPECIFICATIONS

Box Quantity:

1

Case Quantity:

50

Category:

Latches & Protective Plates

Faceplate:

Roller faceplate 1" x 2 1/8" (25 mm x 54 mm)

Fasteners:

Four #6 FPHWS

Finishes:

US3, US4, US10, US10B, US15, US15A, US19, US26, US26D

Material:

Brass with steel ball roller

Notes:

Adjustable threaded barrel compensates for various door clearances

Adjustable spring tension

For use with wood door and frame

Strike Size:

1-1/2 x 2-1/8" (38 mm x 54 mm). Strike gauge .050" (1 mm)