



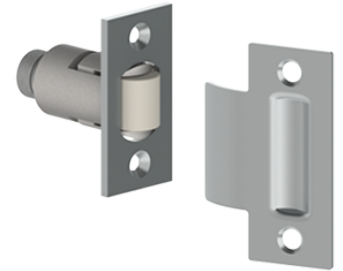
PRODUCT SPECIFICATIONS

For more information visit www.hagerco.com

320R

Roller Catch with Tee Strike

Applications



PRODUCT SPECIFICATIONS

Box Quantity:

1

Case Quantity:

50

Category:

Latches & Protective Plates

Certifications:

Meets ANSI 156.16 for E0910

Faceplate:

Roller faceplate 1-1/8" x 2-1/4" (29 mm x 57 mm)

Fasteners:

Four #8 x 1" FPHWS

Finishes:

US3, US4, US10, US10B, US15, US26, US26D

Material:

Brass with nylon roller

Notes:

Adjustable spring tension with nylon roller

Projection of roller is easily adjusted using screws on faceplate

Max projection of the roller is 3/8" (9.5 mm) allowing for variance in door and frame clearance

For use with wood door and frame

Strike Size:

1-1/8" x 2-3/4" x 1/16" thick (29 mm x 70 mm x 2 mm). Strike gauge .058" (1.3 mm)