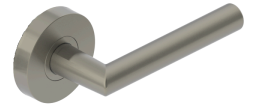




PRODUCT SPECIFICATIONS  
For more information visit [www.hagerco.com](http://www.hagerco.com)

## 2327 - Double Dummy

Applications  
Multi-Family



### PRODUCT SPECIFICATIONS

Door Thickness:  
1-3/8" - 1-3/4" (35 mm - 45 mm)

Exposed Trim:  
Lever is zinc based  
Rose is stainless steel

Features:  
No exposed mounting screws  
Non-handed (except Johnston and Warren levers)

Finishes:  
US10B, US15, US26 and US26D  
Finishes other than US26D and US15 will be subject to extended lead times, consult customer service for availability.

Functions:  
Double Dummy

Lever Options:  
Charles, Louis, Johnston, Joshua and Warren

Optional Finish:  
Split finish available

Rose Diameter:  
2-1/2" (63 mm)

Warranty:  
5-year