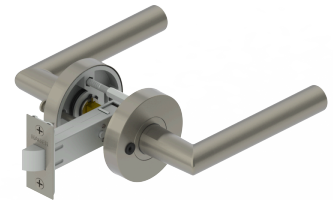




PRODUCT SPECIFICATIONS
For more information visit www.hagerco.com

2340 - Privacy

Applications
Multi-Family



PRODUCT SPECIFICATIONS

Backsets:

2-3/4" (70 mm) standard
2-3/8" (60 mm) optional

Certifications:

ADA Compliant ANSI A117.1 Accessibility Code

Door Thickness:

1-3/8" - 1-3/4" (35 mm - 45 mm)

Exposed Trim:

Lever is zinc based
Rose is stainless steel

Features:

No exposed mounting screws
Non-handed (except Johnston and Warren levers)

Finishes:

US10B, US15, US26 and US26D
Finishes other than US26D and US15 will be subject to extended lead times, consult customer service for availability.

Functions:

Privacy

How To Order:

Decorative Tubular Locks
2-3/8" (60 mm) backset (optional)
2-3/4" (70 mm) backset (standard)
2-1/4" x 1" (57 mm x 25 mm) SC and RC Faceplate (standard)

Round and square corner full lip strikes (standard)

Optional strikes available. For ASA strike, add \$7.00 adder to list price of the lock.

Refer to catalog or website for more detailed information on functions.

Finishes other than US10B, US15, and US26D, are subject to extended lead-times. Consult customer service for availability.

When ordering handed lever designs, LH=LHR and RH=RHR

Latchbolt Type:

7/16" (11 mm) throw
1" x 2-1/4" (25 mm x 57 mm) faceplate

Lever Options:

Charles, Louis, Johnston, Joshua and Warren

Optional Finish:

Split finish available

Rose Diameter:

2-1/2" (63 mm)

Strikes:

Square and round corner full-lip strikes come standard
Optional strikes available

Warranty:

5-year