



PRODUCT SPECIFICATIONS

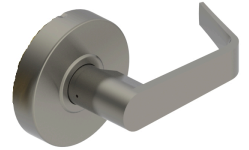
For more information visit www.hagerco.com

2527 - Double Dummy

Grade 2 Cylindrical Leverset

Applications

Standard Duty Commercial



PRODUCT SPECIFICATIONS

Certifications:

ADA Compliant ANSI A117.1 Accessibility Code

Door Thickness:

1-3/8" - 2" (35 mm - 51 mm)

Exposed Trim:

Wrought brass, bronze, and stainless steel

Lever is zinc based, plated to match BHMA symbols

Features:

No exposed mounting screws

Non-handed

Finishes:

US3, US10B and US26D

Functions:

Double Dummy

Lever Options:

Archer and Withnell

Rose Diameter:

3-11/32" (85 mm)

Warranty:

5-year