

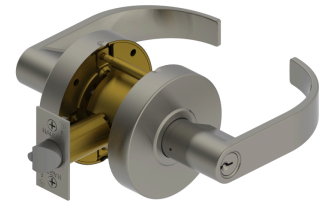


PRODUCT SPECIFICATIONS
For more information visit www.hagerco.com

2580 - Storeroom (F86)

Applications

Standard Duty Commercial



PRODUCT SPECIFICATIONS

Backsets:

- 2-3/4" (70 mm)
- 2-3/8" (60 mm)

Certifications:

- ADA Compliant ANSI A117.1 Accessibility Code
- UL/cUL Listed for all functions up to 3 hours "A" label single doors
- UL10C Positive Pressure Rated
- Meets BHMA A156.2 Grade 2 test standards

Cylinders/Cores:

- Keyed Different - standard
- Cylinder drilled 6 pin, Keyed 5 pin - standard
- Other Keying options, including 6 pin keyed, available from factory
- Zero bit cylinders will be 6 pin keyed
- SFIC uncombined or combined, brass 6 pin or 7 pin cores sold separately

Door Thickness:

- 1-3/8" - 2" (35 mm - 51 mm)

Exposed Trim:

- Wrought brass, bronze, and stainless steel
- Lever is zinc based, plated to match BHMA symbols

Finishes:

- US3, US10B and US26D

Functions:

- Storeroom (F86)

Keyway:

- Schlage C - Standard, other keyways optional

Latchbolt Type:

- 1/2" (13 mm) throw, stainless steel
- 1-1/8" x 2-1/4" (29 mm x 57 mm) faceplate for 2-3/4" (70 mm) backset
- 1" x 2-1/4" (25 mm x 57 mm) faceplate for 2-3/8" backset
- Deadlocking latchbolt prevents manipulation when door is closed

Lever Options:

- Archer and Withnell

Lock Chassis:

- Heavy gauge steel, zinc dichromated for corrosion resistance.
- Thru-posts are removable.
- Failure to install thru-posts and screws voids BHMA certification, UL rating, and warranty.

Notes:

- SFIC option available (Cores are sold separately - standard)
- No exposed mounting screws
- Non-handed

Options:

- Additional latchbolts and strikes available.

Rose Diameter:

- 3-11/32" (85 mm)

Standard Door Prep:

- Standard door prep - 2-1/8" (54 mm) diameter (cross bore)
- Latch hole - 1" (25 mm) diameter (edge bore)

Strikes:

- 1-1/4" x 4-7/8" (32 mm x 124 mm) ASA strike

Warranty:

- Five-year