

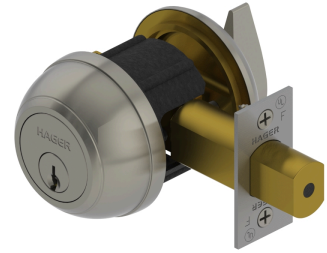


PRODUCT SPECIFICATIONS
For more information visit www.hagerco.com

3118 - Classroom (E2171)

Applications

Heavy Duty Commercial



PRODUCT SPECIFICATIONS

Backsets:

- 2-3/4" (70 mm) Standard
- 2-3/8" (60 mm) Option

Certifications:

- ADA Compliant ANSI A117.1 Accessibility Code
- UL/cUL Listed for all functions up to 3 hours "A" label single doors
- UL10C Positive Pressure Rated
- BHMA Certified ANSI A156.36, Grade 1
- ANSI A250.13 Severe Windstorm Compliant
- Miami Dade County, FL NOA #17-1226.23

Cylinders/Cores:

- Keyed Different - standard
- Cylinder drilled 6 pin, Keyed 5 pin - standard
- Other Keying options, including 6 pin keyed, available from factory
- Zero bit cylinders will be 6 pin keyed
- SFIC uncombined or combined, brass 6 pin or 7 pin cores sold separately

Deadbolt:

- 1" (25 mm) throw, brass with concealed hardened steel roller
- 1-1/8" x 2-1/4" (29 mm x 57 mm) faceplate

Door Thickness:

- 1-3/4" - 2" (45 mm - 51 mm) - Standard
- 2-1/4" (57 mm) - Optional for conventional keyed only

Exposed Trim:

- Wrought Brass or Bronze

Finishes:

- US3, US4, US10B, US26 and US26D

Functions:

- Classroom (E2171)

Keys:

- Two operating keys supplied per lock

Keyway:

- Schlage C - Standard, other keyways available

Notes:

- SFIC option available (Cores are sold separately - standard)
- Handing is field reversible

Options:

- Split Finish
- Additional Deadbolts and strikes available

Strikes:

- 1-1/8" x 2-3/4" (29 mm x 70 mm) no-lip strike standard
- Optional ASA strike available

Warranty:

- Lifetime