

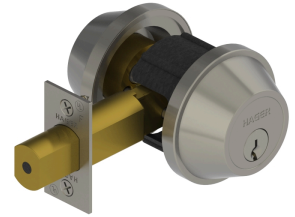


PRODUCT SPECIFICATIONS  
For more information visit [www.hagerco.com](http://www.hagerco.com)

## 3214 - Double Cylinder (E2142)

### Applications

Standard Duty Commercial



### PRODUCT SPECIFICATIONS

#### Backsets:

- 2-3/4" (70 mm) Standard
- 2-3/8" (60 mm) Optional

Warranty:  
Lifetime

#### Certifications:

- ADA Compliant ANSI A117.1 Accessibility Code
- UL/cUL Listed for all functions up to 3 hours "A" label single doors
- UL10C Positive Pressure Rated
- BHMA Certified ANSI A156.36, Grade 2
- ANSI A250.13 Severe Windstorm Compliant
- Miami Dade County, FL NOA #17-1226.23

#### Cylinders/Cores:

- Keyed Different - standard
- Cylinder drilled 6 pin, Keyed 5 pin - standard
- Other Keying options, including 6 pin keyed, available from factory
- Zero bit cylinders will be 6 pin keyed
- SFIC uncombined or combined, brass 6 pin or 7 pin cores sold separately

#### Deadbolt:

- 1" (25 mm) Throw - Brass with concealed hardened steel roller to prevent sawing or cutting
- 1-1/8" x 2-1/4" (29 mm x 57 mm) square corner faceplate

#### Door Thickness:

- 1-3/8" - 1-3/4" (35 mm - 45 mm) - Standard
- 2-1/4" (57mm) - Optional for conventionally keyed only
- 1-3/4" (35 mm) only - 3214 SFIC and 3216

#### Exposed Trim:

- Wrought Brass, Bronze or Stainless Steel

#### Finishes:

- US3, US4, US10B, US26D and US32D

#### Functions:

- Double Cylinder (E2142)

#### Keys:

- Two operating keys supplied per lock

#### Keyway:

- Schlage C - Standard, other keyways optional

#### Notes:

- Non-handed

#### Options:

- Split Finish
- Additional Deadbolts and strikes available

#### Strikes:

- 3930 - 1-1/8" x 2-3/4" (29 mm x 70 mm) no-lip strike - standard
- 3929 - 1-1/4" x 4-7/8" (32 mm x 124 mm) ASA deadbolt strike – optional