



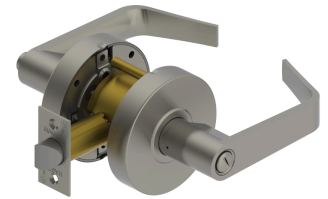
## PRODUCT SPECIFICATIONS

For more information visit [www.hagerco.com](http://www.hagerco.com)

# 2540 - Privacy (F76A)

## Applications

Standard Duty Commercial



## PRODUCT SPECIFICATIONS

### Backsets:

- 2-3/4" (70 mm) standard
- 2-3/8" (60 mm) optional

### Certifications:

- ADA Compliant ANSI A117.1 Accessibility Code
- UL/cUL Listed for all functions up to 3 hours "A" label single doors
- UL10C Positive Pressure Rated
- Meets BHMA A156.2 Grade 2 test standards

### Door Thickness:

- 1-3/8" - 2" (35 mm - 51 mm)

### Exposed Trim:

- Wrought brass, bronze, and stainless steel
- Lever is zinc based, plated to match BHMA symbols

### Features:

- No exposed mounting screws
- Non-handed

### Finishes:

- US3, US10B and US26D

### Functions:

- Privacy (F76A)

### Latchbolt Type:

- 1/2" (13 mm) throw, stainless steel 1-1/8" x 2-1/4" (29 mm x 57 mm) faceplate for 2-3/4" (70 mm) backset
- 1" x 2-1/4" (25 mm x 57 mm) faceplate for 2-3/8" (60mm) backset

### Lever Options:

- Archer and Withnell

### Lock Chassis:

- Heavy gauge steel, zinc dichromated for corrosion resistance.
- Thru-posts are removable.
- Failure to install thru-posts and screws voids BHMA certification, UL rating, and warranty.

### Options:

- Additional latchbolts and strikes available.

### Rose Diameter:

- 3-11/32" (85 mm)

### Standard Door Prep:

- Standard door prep - 2-1/8" (54 mm) diameter (cross bore)
- Latch hole - 1" (25 mm) diameter (edge bore)

### Strikes:

- 1-1/4" x 4-7/8" (32 mm x 124 mm) ASA strike

### Warranty:

- 5-year