

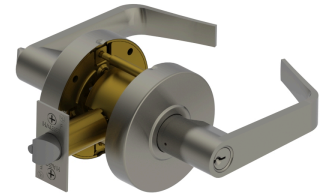


PRODUCT SPECIFICATIONS  
For more information visit [www.hagerco.com](http://www.hagerco.com)

## 2553 - Entry (F109)

### Applications

Standard Duty Commercial



### PRODUCT SPECIFICATIONS

#### Backsets:

- 2-3/4" (70 mm) standard
- 2-3/8" (60 mm) optional

#### Certifications:

- ADA Compliant ANSI A117.1 Accessibility Code
- UL/cUL Listed for all functions up to 3 hours "A" label single doors
- UL10C Positive Pressure Rated
- Meets BHMA A156.2 Grade 2 test standards

#### Cylinders/Cores:

- Keyed Different - standard
- Cylinder drilled 6 pin, Keyed 5 pin - standard
- Other Keying options, including 6 pin keyed, available from factory
- Zero bit cylinders will be 6 pin keyed
- SFIC uncombined or combined, brass 6 pin or 7 pin cores sold separately

#### Door Thickness:

- 1-3/8" - 2" (35 mm - 51 mm)

#### Exposed Trim:

- Wrought brass, bronze, and stainless steel
- Lever is zinc based, plated to match BHMA symbols

#### Features:

- No exposed mounting screws
- Non-handed

#### Finishes:

- US3, US10B and US26D

#### Functions:

- Entry (F109)

#### Keys:

- Two operating keys supplied per lock

#### Keyway:

- Schlage C - Standard, other keyways optional

#### Latchbolt Type:

- 1/2" (13 mm) throw, stainless steel
- 1-1/8" x 2-1/4" (29 mm x 57 mm) faceplate for 2-3/4" (70 mm) backset
- 1" x 2-1/4" (25 mm x 57 mm) faceplate for 2-3/8" (60mm) backset
- Deadlocking latchbolt prevents manipulation when door is closed

#### Lever Options:

- Archer and Withnell

#### Lock Chassis:

- Heavy gauge steel, zinc dichromated for corrosion resistance.
- Thru-posts are removable.
- Failure to install thru-posts and screws voids BHMA certification, UL rating, and warranty.

#### Notes:

- Standard cylinder or Small Format Interchangeable Core housing available

#### Options:

- Interchangeable Cores are sold separately
- Additional latchbolts and strikes available.

#### Rose Diameter:

- 3-11/32" (85 mm)

#### Standard Door Prep:

- Standard door prep - 2-1/8" (54 mm) diameter (cross bore)
- Latch hole - 1" (25 mm) diameter (edge bore)

#### Strikes:

- 1-1/4" x 4-7/8" (32 mm x 124 mm) ASA strike

#### Warranty:

- 5-year