



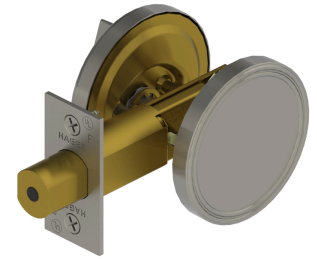
PRODUCT SPECIFICATIONS

For more information visit www.hagerco.com

3220 - Thumbturn Only w/ Blank Plate (E21112)

Applications

Standard Duty Commercial



PRODUCT SPECIFICATIONS

Backsets:

Adjustable 2-3/8" - 2-3/4" (60mm - 70mm)

Certifications:

ADA Compliant ANSI A117.1 Accessibility Code
BHMA Certified ANSI A156.36, Grade 2

Deadbolt:

1" (25 mm) Throw - Brass with concealed hardened steel roller to prevent sawing or cutting
1-1/8" x 2-1/4" (29 mm x 57 mm) square corner faceplate

Door Thickness:

1-3/4" (45 mm)

Exposed Trim:

Wrought Brass, Bronze or Stainless Steel

Finishes:

US3, US4, US10B, US26D and US32D

Functions:

Thumbturn w/ Blank Plate (E21112)

Notes:

Non-handed

Options:

Split Finish
Additional Deadbolts and strikes available

Strikes:

3930 - 1-1/8" x 2-3/4" (29 mm x 70 mm) no-lip strike - standard
3929 - 1-1/4" x 4-7/8" (32 mm x 124 mm) ASA deadbolt strike – optional

Warranty:

Lifetime