

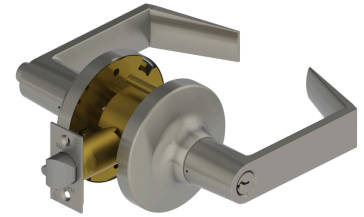


PRODUCT SPECIFICATIONS  
For more information visit [www.hagerco.com](http://www.hagerco.com)

## 3473 - Corridor/Dormitory (F90)

### Applications

Extra Heavy Duty Commercial  
Industrial  
Institution



### PRODUCT SPECIFICATIONS

#### Backsets:

2-3/4" (70mm) - Standard  
2-3/8" (60mm) - Optional  
3-3/4" (94mm) - Optional  
5" (128mm) - Optional

#### Certifications:

ADA Compliant ANSI A117.1 Accessibility Code  
UL/cUL Listed for all functions up to 3 hours "A" label single doors  
UL10C Positive Pressure Rated  
BHMA Certified ANSI A156.2, Series 4000, Grade 1  
ANSI A250.13 Severe Windstorm Compliant  
Miami Dade County, FL NOA #17-1226.23

#### Cylinders/Cores:

Keyed Different - standard  
Cylinder drilled 6 pin, Keyed 5 pin - standard  
Other Keying options, including 6 pin keyed, available from factory  
Zero bit cylinders will be 6 pin keyed  
SFIC uncombined or combined, brass 6 pin or 7 pin cores sold separately  
LFIC Zero-Blt or combined, brass 6 pin cores sold separately

#### Door Thickness:

1-3/8" - 2" (35 mm - 51 mm)

#### Exposed Trim:

Wrought brass, bronze, and stainless steel  
Lever is zinc based, plated to match BHMA symbols

#### Features:

No exposed mounting screws  
Non-handed  
Free wheeling levers

#### Finishes:

US3, US4, US10B, US26 and US26D  
Anti-Microbial Coating (US26D finish only)

#### Functions:

Corridor/Dormitory (F90)

#### Keyway:

Schlage C - Standard, Other keyways optional

#### Latchbolt Type:

1/2" (13 mm) throw, stainless steel  
1-1/8" x 2-1/4" (29 mm x 57 mm) faceplate  
Deadlocking latchbolt prevents manipulation when door is closed  
3/4" (19 mm) throw latchbolt available

#### Lever Options:

Archer, August and Withnell

#### Lock Chassis:

Heavy gauge steel, zinc dichromated for corrosion resistance. Thru-post mounted.

#### Notes:

SFIC option available (Cores are sold separately - standard)  
LFIC option available (Cores sold separately - standard)

#### Options:

Lead Lining  
Tactile Warning  
Split Finish

#### Rose Diameter:

3-17/32" (90 mm)

#### Standard Door Prep:

2-1/8" (54 mm) diameter with thru-bolt holes (cross bore)  
Latch hole - 1" (25 mm) diameter (edge bore)

#### Strikes:

1-1/4" x 4-7/8" (32 mm x 124 mm) ASA strike  
Optional strikes available

#### Warranty:

Lifetime