

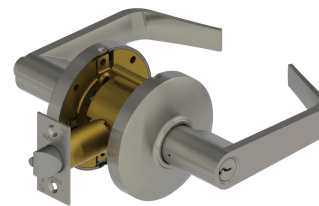


PRODUCT SPECIFICATIONS
For more information visit www.hagerco.com

3553 - Entry (F109)

Applications

Standard Duty Commercial



PRODUCT SPECIFICATIONS

Backsets:

- 2-3/4" (70mm)
- 2-3/8" (60mm)
- 3-3/4" (94mm)
- 5" (128mm)

Certifications:

- ADA Compliant ANSI A117.1 Accessibility Code
- UL/cUL Listed for all functions up to 3 hours "A" label single doors
- UL10C Positive Pressure Rated
- BHMA Certified ANSI A156.2, Series 4000, Grade 2
- ANSI A250.13 Severe Windstorm Compliant (Leversets Only)
- Miami Dade County, FL NOA #17-1226.23

Cylinders/Cores:

- Keyed Different - standard
- Cylinder drilled 6 pin, Keyed 5 pin - standard
- Other Keying options, including 6 pin keyed, available from factory
- Zero bit cylinders will be 6 pin keyed
- SFIC uncombined or combined, brass 6 pin or 7 pin cores sold separately

Door Thickness:

- 1-3/8" - 2" (35 mm - 51 mm)

Exposed Trim:

- Wrought brass, Bronze, and Stainless steel

Finishes:

- US3, US4, US10, US10B, US26 and US26D
- Anti-Microbial coating (US26D finish only)

Functions:

- Entry (F109)

Keyway:

- Schlage C - Standard, other keyways optional

Latchbolt Type:

- 1/2" (13 mm) throw, stainless steel
- 1-1/8" x 2-1/4" (29 mm x 57 mm) faceplate for 2-3/4" (70 mm) backset
- 1" x 2-1/4" (25 mm x 57 mm) faceplate for 2-3/8" (60 mm) backset
- Deadlocking latchbolt prevents manipulation when door is closed

Lever Options:

- Archer, August and Withnell

Lock Chassis:

- Heavy gauge steel, zinc dichromated for corrosion resistance. Thru-posts are removable. Failure to install thru-posts and screws voids BHMA certification, UL rating, and warranty

Notes:

- No exposed mounting screws
- Non-handed

Options:

- Lead Lining
- Tactile Warning
- Split Finish

Rose Diameter:

- 3-11/32" (85 mm)

Strikes:

- 1-1/4" x 4-7/8" (32 mm x 124 mm) ASA strike
- Optional strikes available

Warranty:

- Lifetime